



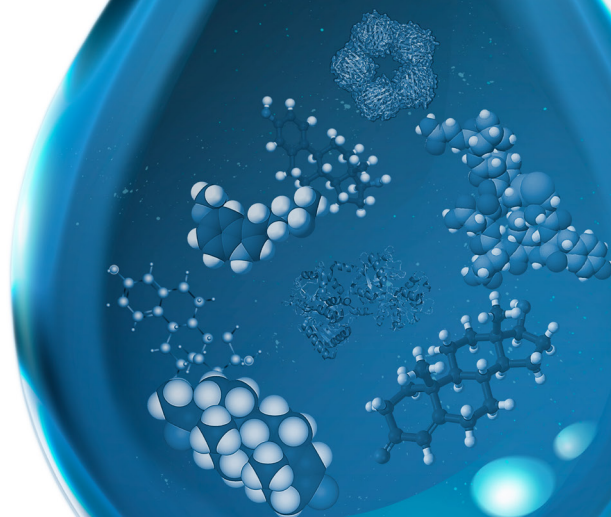
Your distributor in Switzerland

LubioScience GmbH  
Baumackerstrasse 24  
8050 Zurich

+41 41 417 02 80

info@lubio.ch  
www.lubio.ch

## Collecting Saliva



## Salivary Research

Discovery • Science • Innova • Collabora • Impact

## How Much Saliva Do You Collect?

ANALYTE OVERVIEW					
Analyte	Sensitivity	Approved Collection Method	Collection Volume (duplicate)	Testing Service	Assay Kit
Alpha-Amylase	0.4 U/mL	PD, SOS, SCS, SIS	25 µL*	✓	✓
Androstenedione	5 pg/mL	PD	125 µL*	✓	✓
Blood Contamination	0.08 mg/dL	PD	75 µL*	✓	✓
Chromogranin A	0.07 ng/mL	PD, SOS, SCS, SIS	75 µL*	✓	—
Cortisol	<0.007 µg/dL	PD, SOS, SCS, SIS	75 µL*	✓	✓
Cotinine	0.15 ng/mL	PD, SOS, SCS, SIS	75 µL*	✓	✓
CRP	10 pg/mL	PD, SOS, SCS, SIS	125 µL*	✓	✓
Dexamethasone	0.01 ng/mL	Cotton Rope	75 µL*	✓	—
DHEA	5 pg/mL	PD	125 µL*	✓	✓
DHEA-S	43 pg/mL	PD	225 µL*	✓	✓
Estradiol	0.1 pg/mL	PD	225 µL*	✓	✓
Estriol	1 pg/mL	PD	175 µL*	✓	✓
Estrone	1 pg/mL	PD	225 µL*	✓	✓
IL-1 Beta	<0.37 pg/mL	PD, SOS, SCS, SIS	50 µL*	✓	✓
IL-6	0.07 pg/mL	PD, SOS, SCS, SIS	135 µL*	✓	✓
Melatonin	0.58 pg/mL	PD, SOS, SCS, SIS	225 µL*	✓	✓
Neopterin	0.51 ng/mL	PD	125 µL*	✓	—
17OH-Progesterone	3 pg/mL	PD	125 µL*	✓	✓
Progesterone	5 pg/mL	PD	125 µL*	✓	✓
SIgA	2.5 µg/mL	PD, SOS, SCS, SIS	50 µL*	✓	✓
Testosterone	1 pg/mL	PD, SOS, SCS, SIS	75 µL*	✓	✓
Total Protein	5 µg/mL	PD	75 µL*	✓	—
TNF-α	0.106 pg/mL	PD	425 µL*	✓	—
Uric Acid	0.07 mg/dL	PD, SOS, SCS, SIS	25 µL*	✓	✓

\*In addition to the volume recommended for each analyte, we recommend collecting an additional 300 µL to allow for liquid handling loss and possible repeats (500 µL for TNF-α).

## What Will You Discover Today?

Salimetrics assays have been used in more saliva-related published papers than any other salivary assay in the field. We offer behavioral, social and medically focused researchers superior tools to translate research findings into new therapies and medications thereby improving quality of life. We commit ourselves to the development of salivary tools that support the efforts of researchers around the globe.

# How Should You Collect Saliva?

## COLLECTION METHODS

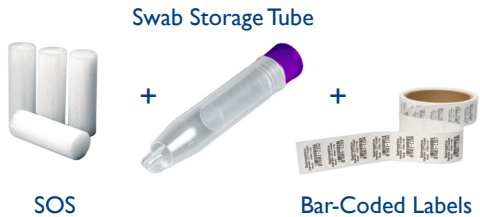
### Passive Drool (PD):

Passive drool is highly recommended because it is cost effective and approved for use with almost all analytes. To avoid problems with analyte retention or the introduction of contaminants, use only high quality polypropylene vials for collection, such as our 2 ml cryovials. Volume Range (Up to 2 mL)



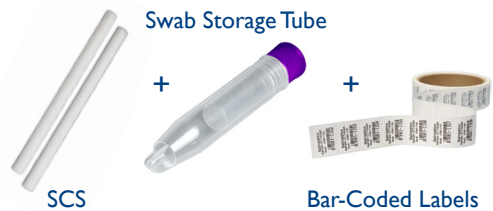
### SalivaBio Oral Swab (SOS):

For many analytes, the SalivaBio Oral Swab (SOS) is an excellent alternative to passive drool because of its ease of use. The SOS also helps filter mucus and other matter from the sample, which may help improve immunoassay results. Volume Range (200 µL - 2 mL)



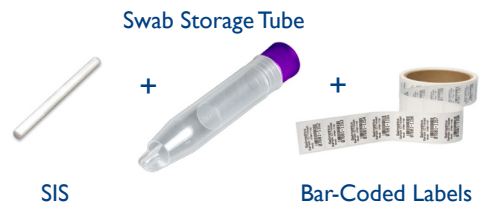
### SalivaBio Children's Swab (SCS):

Manufactured with the same material as the SOS but in a longer length, the SCS was designed for children under the age of six, the elderly, and animal applications. The longer length allows one end to be held by a parent or technician while the other end is placed in the mouth. Volume Range (200 µL - 2 mL)



### SalivaBio Infant's Swab (SIS):

Manufactured with the same material as the SOS but in a longer length, the SIS was designed with a narrow diameter for infants under the age of six months. The longer length allows one end to be held by a parent or technician while the other end is placed in the infant's mouth. Volume Range (200 µL - 1 mL)



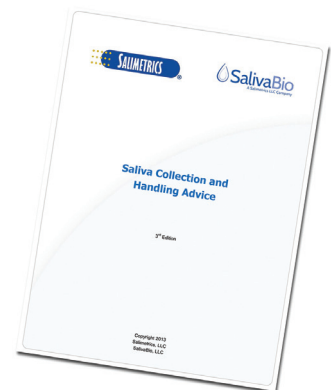
## Study Worksheet

Study Name \_\_\_\_\_

# Of Subjects \_\_\_\_\_ Samples Per Subject \_\_\_\_\_ Total # of Samples \_\_\_\_\_

Collection Method ☐ Passive Drool ☐ SOS ☐ SCS ☐ SIS ☐ Other

Analytes	Volume Required
_____	_____
_____	_____
_____	_____
Liquid Handling	+300 µL
Total Collection Volume Required Per Sample	_____



### The Saliva Collection Handbook!

Learn proper techniques and methods for saliva collection, handling, and storage with our pocket guide. \*Printable version available on our website!

## Stay Connected With Saliva Research



Our organized online research library includes the research and important saliva-based topics from respected opinion leaders, including an archive of our own Spit Reports in our online research library.



Stay informed with the latest in saliva research, techniques and findings. Our Spit Report is delivered straight to your inbox six issues per year.



These saliva based workshops and two-day camps cover topics ranging from saliva collection methods and the basics of enzyme immunoassay techniques, to lab training and integration of salivary measures into scientific studies.



Achieve meaningful results. Get advice from Salimetrics on saliva collection and assay techniques – select from videos and publications.



The lab testing your samples should have the knowledge, experience and references to consistently deliver accurate results. Select a lab that participates in a proficiency testing program and maintains reliable saliva assay techniques.

**Your local distributor:**

**lubio  
science**



[www.salimetrics.com](http://www.salimetrics.com)