

# RevMAB Biosciences®

## ABOUT US

**RevMAB Biosciences USA, Inc** is a biotechnology company focused on the development of recombinant monoclonal antibodies using a revolutionary technology that does not require cell fusion and hybridoma generation. Our team consists of pioneers in optimizing and transforming rabbit hybridoma technology for commercial application, and developing rabbit monoclonal antibodies for research, diagnostic and therapeutic use.



### DIRECT MANUFACTURER

We develop and produce all our own antibody products.



### IN-HOUSE VALIDATION

We validate every product to ensure the quality of the antibodies.



### CUSTOMER SUPPORT

We provide superior tech support and being your reliable partner.

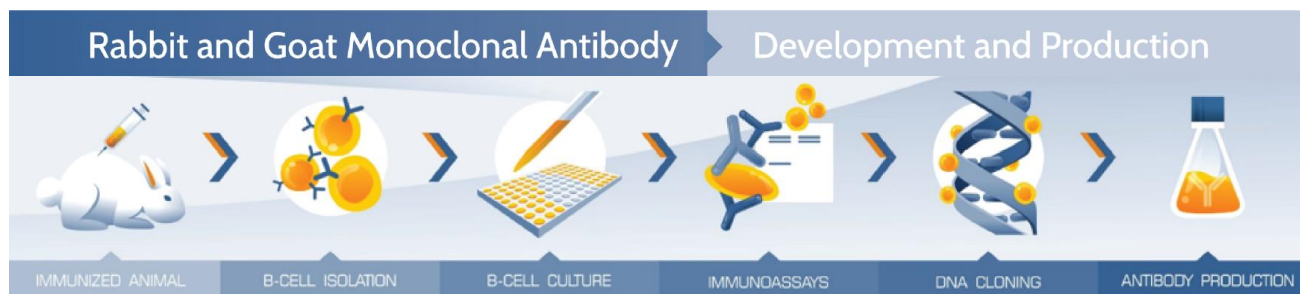
## CONTACT US

[WWW.REVMAB.COM](http://WWW.REVMAB.COM)  
[INFO@REVMAB.COM](mailto:INFO@REVMAB.COM)

## WHAT WE OFFER ?

Antibody Manufacturing  
Antibody Production  
Antibody Characterization  
Antibody Engineering  
Assay Development  
Antibody Pair

## RevMAb B cell Cloning Technology



RevMAb offers a number of different rabbit and goat monoclonal antibody development and production services. We develop monoclonal antibodies directly from the isolated B Cells of immunized animals using our proprietary technology. The B cells are grown in 96-well plates and their supernatants are screened to identify the B cell clones that produce antigen specific antibodies for desired applications. The antibodies are recombinantly produced by cloning their H and L chain cDNAs and expressing them in mammalian cells. Our technology has so far been successfully applied to produce a various range of antibodies with high specificity and affinity for research, diagnostic, and therapeutic use.

### Benefits

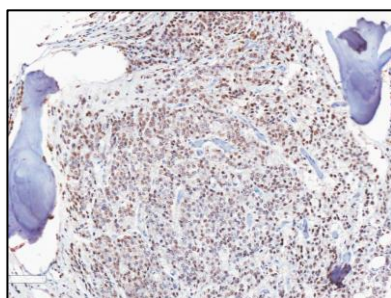
- Reduced time and costs
- High sensitivity/specificity
- High consistency/reproducibility
- Product uniqueness
- Animal-free production
- Ease of scalability

### Product Categories

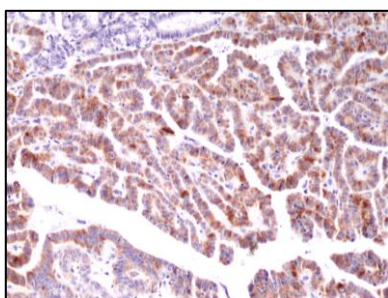
- Point mutation specific
- Hu/Mus immunoglobulins
- Histone modifications
- Histone family and variants
- Pan protein modifications
- IHC/Pathology
- DNA methylation
- Small molecule
- Epitope tag
- Control antibodies



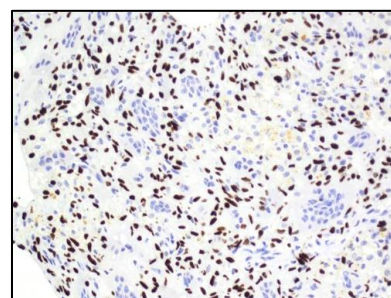
## Mutation Specific Antibody- Potential IVD Products



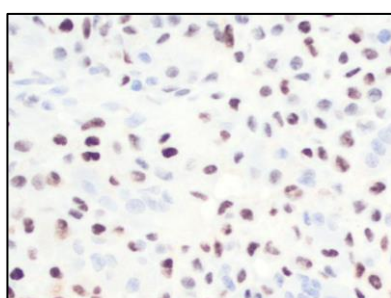
**AR-V7 Specific Antibody**  
**[RM7]**



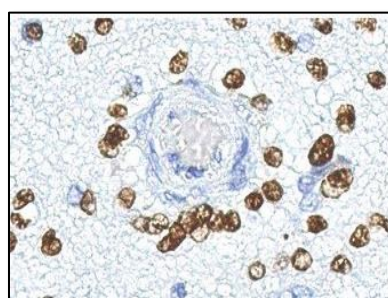
**BRAFV600E Antibody**  
**[RM8]**



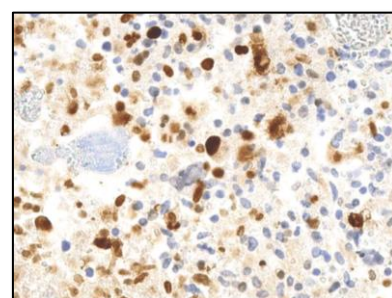
**H3.3 G34W Antibody**  
**[RM263]**



**H3 K36M Antibody**  
**[RM193]**



**H3 K27M Antibody**  
**[RM192]**



**H3.3 G34R Antibody**  
**[RM240]**

## References

1. Cato L et al. ARv7 Represses Tumor-Suppressor Genes in Castration-Resistant Prostate Cancer. *Cancer Cell*. (2019)
2. Sharp A et al. Clinical Utility of Circulating Tumour Cell Androgen Receptor Splice Variant-7 Status in Metastatic Castration-resistant Prostate Cancer. *Eur Urol*. (2019)
3. Luo J et al. Noninvasive Detection of AR-FL/AR-V7 as a Predictive Biomarker for Therapeutic Resistance in Men with Metastatic Castration-Resistant Prostate Cancer. *U.S. Army Medical Research and Materiel Command*. (2018)
4. Krishnamurthy A et al. Clinical utility of immunohistochemistry using the novel anti-BRAF V600E antibody (clone RM8) for detection of the BRAF V600E mutant protein in papillary thyroid cancers. *Int J Mol ImmunoOncol*. (2018)
5. Usman H et al. Result Analysis of BRAF V600E Gene Mutation Using Molecular and Immunohistochemistry Detection in Acral Malignant Melanoma. *Asian Pacific Journal of Cancer Care*. (2018)
6. Schaefer IM, et al. Immunohistochemistry for Histone H3G34W and H3K36M Is Highly Specific for Giant Cell Tumor of Bone and Chondroblastoma, Respectively, in FNA and Core Needle Biopsy. *Cancer Cytopathol*. (2018)
7. Pathania M et al. H3.3K27M Cooperates with Trp53 Loss and PDGFRA Gain in Mouse Embryonic Neural Progenitor Cells to Induce Invasive High-Grade Gliomas *Cancer Cell*. (2017)
8. Qiu T et al. Imaging characteristics of adult H3 K27M-mutant gliomas. *J Neurosurg*. (2019)
9. Yamamoto H et al. Diagnostic utility of histone H3.3G34 W, G34R, and G34 V mutant-specific antibodies for giant cell tumors of bone. *Human Pathology*. (2017)

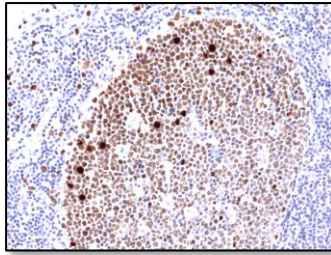


**RevMab Feature Rabbit Monoclonal Antibodies for IHC**

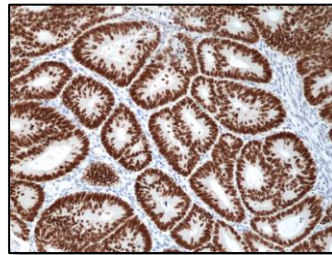
 **Feature IHC Antibody**



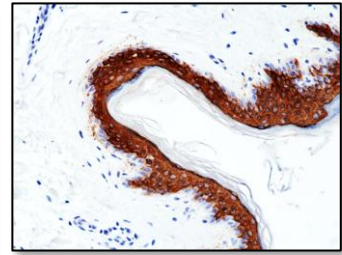
**CK5/6 Antibody**  
**[RM341]**



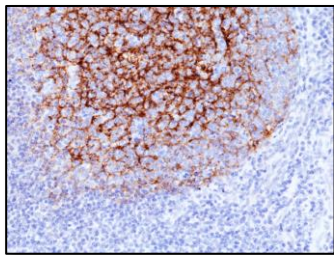
**Ki67 Antibody**  
**[RM360]**



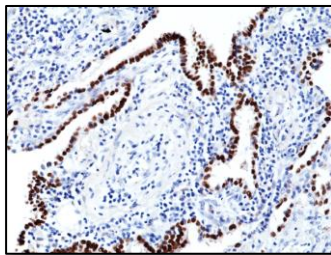
**SATB2 Antibody**  
**[RM365]**



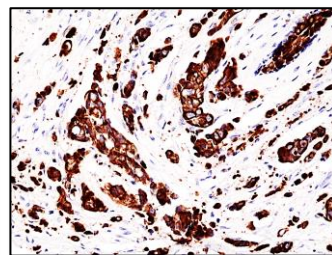
**CK10 Antibody**  
**[RM386]**



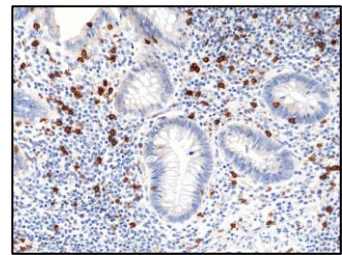
**CD21 Antibody**  
**[RM397]**



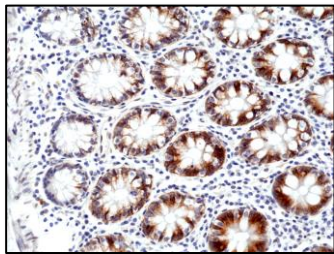
**TTF1 Antibody**  
**[RM373]**



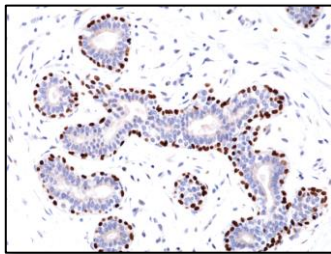
**CK19 Antibody**  
**[RM364]**



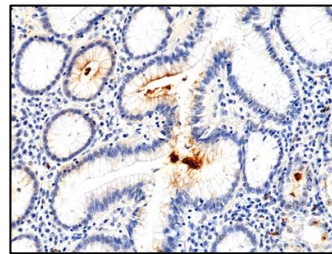
**CD8A Antibody**  
**[RM397]**



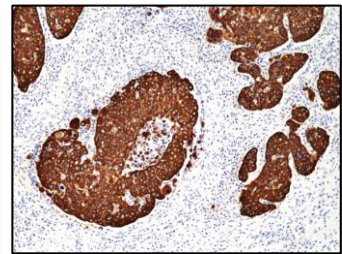
**CD71 Antibody**  
**[RM384]**



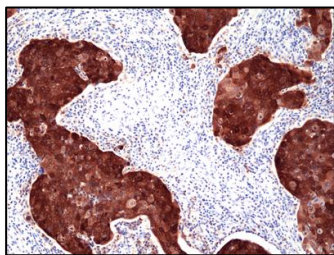
**p63 Antibody**  
**[RM383]**



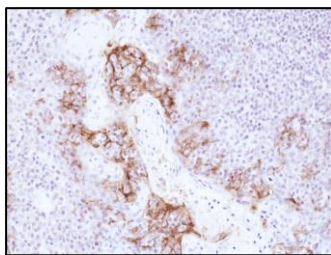
**H. Pylori Antibody**  
**[RM400]**



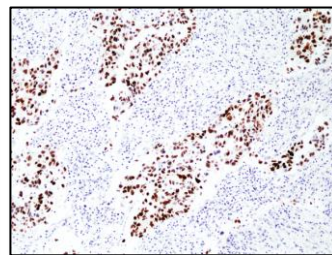
**CK14 Antibody**  
**[RM328]**



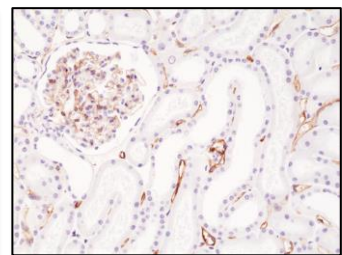
**p16 Antibody**  
**[RM409]**



**PD-L1 Antibody**  
**[RM320]**



**p53 Antibody**  
**[RM387]**



**CD34 Antibody**  
**[RM300]**

## Feature IHC Antibody List

Product Name	Clone Number	Application
Cytokeratin (CK5) Antibody	RM226	IHC, WB
Her2 Antibody	RM228	IHC, WB
Cyclin D1 Antibody	RM241	IHC, WB
GFAP Antibody	RM246	IHC, WB
CD31 Antibody	RM247	IHC, WB
CD79a Antibody	RM297	IHC, WB
CD34 Antibody	RM300	IHC, WB
PD-L1 Antibody	RM320	IHC, WB
Calretinin (CALB2) Antibody	RM324	IHC, WB
Cytokeratin (CK14) Antibody	RM328	IHC, WB
Pax5 Antibody	RM331	IHC, WB
Cytokeratin CK5/6 Antibody	RM341	IHC, WB
CD117/c-Kit Antibody	RM359	IHC, WB
Ki67 Antibody	RM360	IHC, WB
Cytokeratin (CK19) Antibody	RM364	IHC, WB
SATB2 Antibody	RM365	IHC, WB
TPO Antibody	RM368	IHC, WB
CD21 Antibody	RM372	IHC, WB
TTF1 Antibody	RM373	IHC, WB
c-Fos Antibody	RM374	IHC, WB
Terminal deoxynucleotidyl transferase (TdT)	RM379	IHC, WB
CD61 Antibody	RM382	IHC, WB
p63 Antibody	RM383	IHC, WB
CD71 Antibody	RM384	IHC, WB
Cytokeratin 10 (CK10) Antibody	RM386	IHC, WB
p53 Antibody	RM387	IHC, WB
CD1a Antibody	RM393	IHC, WB
TOP2A Antibody	RM394	IHC, WB
Caldesmon (CALD1) Antibody	RM396	IHC, WB
CD8 Antibody	RM397	IHC, WB
H. Pylori Antibody	RM400	IHC
p16 Antibody	RM409	IHC, WB

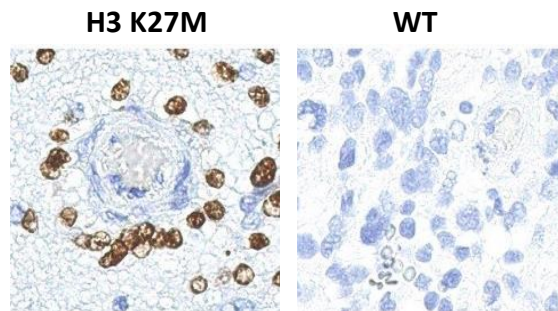


## Rabbit Monoclonal Antibodies for Histone Mutations

Histone mutations have been identified in multiple cancers and demonstrated potential as a useful diagnostic tool. RevMab's Histone H3 Mutation Antibodies have been extensively validated in a variety of applications including IHC, WB, ICC, ELISA, and CHIP. Histone H3 K27M mutation is linked to diffuse midline glioma and H3 K36M is closely associated with chondroblastoma. H3.3 G34W, G34R and G34V mutant-specific antibodies are useful surrogate markers for the diagnosis of GCTBs (Giant cell tumors of bone).

### Histone H3.3 K27M [RM192] Monoclonal Antibody

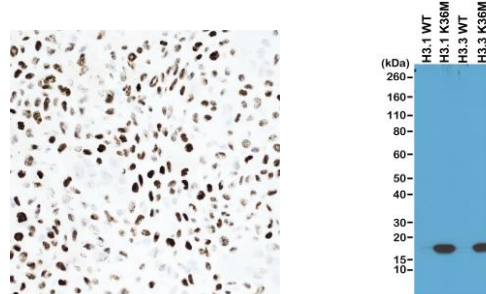
Immunostaining of brain tumor tissue sections with H3 K27M expression (left image) or without K27M expression (right image) using RM192 antibody.



IHC Image courtesy of Dr. Sebastian Brandner, UCL, London, UK

### Histone H3.3 K36M [RM193] Monoclonal Antibody

Immunohistochemical staining of formalin fixed paraffin embedded (FFPE) Chondroblastoma tumor tissue section and Western Blot analysis of 293T cells transfected with a DNA construct encoding WT or K36M mutant proteins of Histone H3.1 and H3.3 using RM193 antibody.



IHC Image courtesy of Dr. Adrienne Flanagan, RNOH, UK

## References

- Schaefer IM, et al. Immunohistochemistry for Histone H3G34W and H3K36M Is Highly Specific for Giant Cell Tumor of Bone and Chondroblastoma, Respectively, in FNA and Core Needle Biopsy. *Cancer Cytopathol* 2018, IHC-P (Human)
- Pathania M et al. H3.3K27M Cooperates with Trp53 Loss and PDGFRA Gain in Mouse Embryonic Neural Progenitor Cells to Induce Invasive High-Grade Gliomas *Cancer Cell* 2017, IHC-P (Human)
- Fang D, et al. The histone H3.3K36M mutation reprograms the epigenome of chondroblastomas. *Science* 2016, CHIP

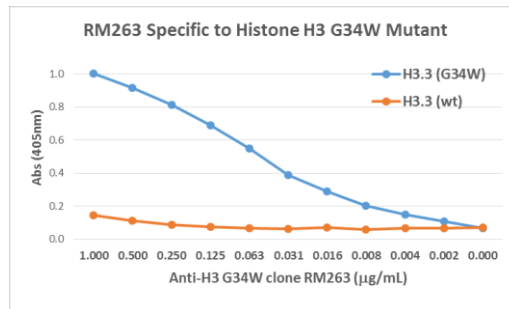
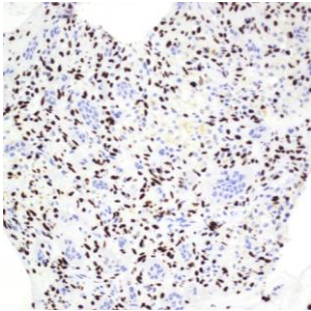
Highly mutant-specific

Validated in IHC, WB,  
ELISA, ICC, and CHIP

See back for Ordering  
Information and Product Catalog

## Histone H3.3 G34 Mutation Antibodies

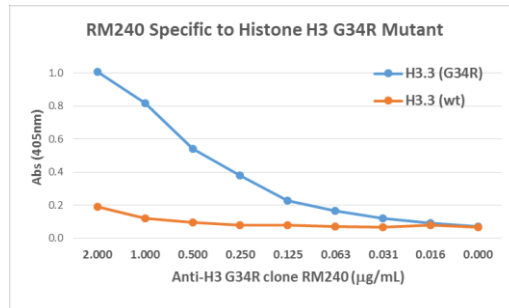
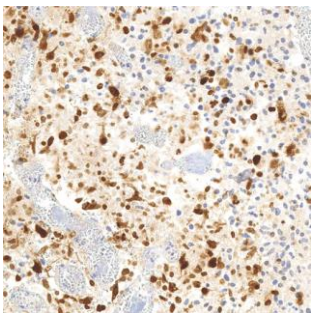
### Histone H3.3 G34W [RM263] Rabbit Monoclonal Antibody



Immunohistochemical staining of Giant Cell Bone Tumor (GCBT) tissue section with H3.3 G34W expression using RM263 antibody. ELISA showing RM263 does not react to H3.3 (WT).

IHC Image courtesy of Dr. Sebastian Brandner, UCL, UK

### Histone H3.3 G34R [RM240] Rabbit Monoclonal Antibody



Immunohistochemical staining of Glioblastoma tumor tissue section with H3.3 G34R expression using RM240 antibody. ELISA showing RM240 does not react to H3.3 (WT).

IHC Image courtesy of Dr. Adrienne Flanagan, RNOH, UK

## References

- Yoshida KI et al. Absence of H3F3A mutation in a subset of malignant giant cell tumor of bone. *Mod Pathol.* 2019, IHC (Human)
- Rehkemper J et al. Diagnostic tools in the differential diagnosis of giant cell-rich lesions of bone at biopsy. *Oncotarget.* 2018, oncotarget, IHC-P (Human)
- Yamamoto H et al. Diagnostic utility of histone H3.3G34 W, G34R, and G34 V mutant-specific antibodies for giant cell tumors of bone. *Human Pathology* 2017, IHC (Human)

## Histone Mutation Antibodies

Product Name	Type	Catalog No.	Clone	Application	Pack Size
Histone 3.3 K36M	Rabbit mAb	31-1085-00	RM193	WB, IHC, ELISA, ICC, ChIP	100µL/400µL
Histone 3.3 K27M	Rabbit mAb	31-1175-00	RM192	WB, IHC, ELISA, ICC	100µL/400µL
Histone 3.3 K9M	Rabbit mAb	31-1160-00	RM191	WB, IHC, ELISA, ICC	100µL/400µL
Histone 3.3 K4M	Rabbit mAb	31-1250-00	RM363	WB, IHC, ELISA, ICC	100µL/400µL
Histone 3.3 G34W	Rabbit mAb	31-1145-00	RM263	WB, IHC, ELISA, ICC, ChIP	100µL/400µL
Histone 3.3 G34R	Rabbit mAb	31-1120-00	RM240	WB, IHC, ELISA, ICC, ChIP	100µL/400µL
Histone 3.3 G34V	Rabbit mAb	31-1193-00	RM307	WB, IHC, ELISA, ICC	100µL/400µL

ORDER: ORDER@REVMAB.COM | INQUIRY: INFO@REVMAB.COM

REVMAB BIOSCIENCES · 830 DUBUQUE AVE · SOUTH SAN FRANCISCO · CA · 94080 · (650) 351-7325 | WWW.REVMAB.COM

## Rabbit Monoclonal Antibodies for Modified Histones

RevMAb offers a full set of antibodies for histones and modified histones to study epigenetics processes and gene regulation. RevMAb primary antibodies are manufactured in-house and have been tested in multiple applications to ensure both quality and performance.

### ChIP-Validated Monoclonal Antibodies

Product Name	Catalog No.	Clone	Application	Pack Size
H3K9ac mAb	31-1054-00	RM161	WB, IHC, ChIP, ICC, Multiplex, ELISA	100ug
H3K18ac mAb	31-1055-00	RM166	WB, IHC, ChIP, ICC, Multiplex, ELISA	100ug
H3K27ac mAb	31-1056-00	RM172	WB, ChIP, ICC, Multiplex, ELISA	100ug
H3K36ac mAb	31-1050-00	RM154	WB, Multiplex, ICC, ELISA, ChIP	100ug
H3K56ac mAb	31-1078-00	RM179	WB, IHC, ChIP, ICC, Multiplex, ELISA	100ug
H3K79ac mAb	31-1052-00	RM156	WB, ChIP, ICC, Multiplex, ELISA	100ug
H4K8ac mAb	31-1082-00	RM201	WB, Multiplex, ICC, ELISA, ChIP	100ug
H4K12ac mAb	31-1088-00	RM202	WB, Multiplex, ICC, ELISA, ChIP	100ug
H4K20ac mAb	31-1084-00	RM205	WB, Multiplex, ICC, ELISA, ChIP	100ug
H3K4me mAb	31-1046-00	RM140	WB, ChIP, ICC, Multiplex, ELISA	100ug
H3K4me2 mAb	31-1037-00	RM135	WB, IHC, ChIP, ICC, Multiplex, ELISA	100ug
H3K4me3 mAb	31-1226-00	RM340	ChIP, ELISA, Multiplex	100ug
H3K9me mAb	31-1064-00	RM150	WB, ChIP, ICC, Multiplex, ELISA	100ug
H3K9me2 mAb	31-1059-00	RM151	WB, ChIP, ICC, Multiplex, ELISA	100ug
H3K27me3 mAb	31-1062-00	RM175	WB, Multiplex, IHC, ELISA, ChIP	100ug
H3K36me3 mAb	31-1051-00	RM155	WB, Multiplex, ChIP, ELISA	100ug
H3K79me2 mAb	31-1065-00	RM181	WB, ChIP, IHC, Multiplex, ELISA	100ug

*See back for Ordering Information  
and Full Product Catalog*

\*Available in Bulk and Custom Formulation  
(carrier-free, glycerol-free, BSA-free, Azide-free)



## Histone Acetylation Antibodies

Product Name	Catalog No.	Clone	Application
H2AZ K4ac	31-1101-00	RM221	WB, Multiplex, ICC, ELISA
H2AZ K7ac	31-1102-00	RM222	WB, Multiplex, ICC, ELISA
H2B K20ac	31-1113-00	RM235	WB, Multiplex, ICC, ELISA
H2B K23ac	31-1141-00	RM260	WB, Multiplex, ICC, ELISA
H3K4ac	31-1063-00	RM149	WB, Multiplex, ICC, ELISA
H3K9ac	31-1054-00	RM161	WB, IHC, ChIP, ICC, Multiplex, ELISA
H3K14ac	31-1032-00	RM130	WB, ChIP, ICC, Multiplex, ELISA
H3K18ac	31-1055-00	RM166	WB, IHC, ChIP, ICC, Multiplex, ELISA
H3K23ac	31-1087-00	RM169	WB, Multiplex, ICC, ELISA
H3K27ac	31-1056-00	RM172	WB, ChIP, ICC, Multiplex, ELISA
H3K36ac	31-1050-00	RM154	WB, ChIP, ICC, Multiplex, ELISA
H3K56ac	31-1078-00	RM179	WB, IHC, ChIP, ICC, Multiplex, ELISA
H3K79ac	31-1052-00	RM156	WB, ChIP, ICC, Multiplex, ELISA
H4K5ac	31-1081-00	RM199	WB, Multiplex, ICC, ELISA
H4K8ac	31-1082-00	RM201	WB, Multiplex, ICC, ELISA, ChIP
H4K12ac	31-1088-00	RM202	WB, ChIP, ICC, Multiplex, ELISA
H4K16ac	31-1083-00	RM204	WB, Multiplex, ELISA
H4K20ac	31-1084-00	RM205	WB, ChIP, ICC, Multiplex, ELISA

## Histone Family Protein Antibodies

Product Name	Catalog No.	Clone	Application
MacroH2A1.2/ H2A2 mAb	31-1118-00	RM248	WB, Multiplex, ICC, ELISA
H2A mAb	31-1108-00	RM225	WB, Multiplex, ICC, ELISA
H2B mAb	31-1112-00	RM230	WB, Multiplex, ICC, ELISA
H2AX mAb	31-1090-00	RM214	WB, Multiplex, ICC, ELISA
H2AZ mAb	31-1091-00	RM215	WB, Multiplex, ICC, ELISA
H3 pan mAb	31-1057-00	RM188	WB, Multiplex, ICC, ELISA
H3.3 mAb	31-1058-00	RM190	WB, Multiplex, ELISA
H4 mAb	31-1089-00	RM212	WB, Multiplex, ICC, ELISA

## Histone Crotonylation Antibodies

Product Name	Catalog No.	Clone	Application
H3K9cr	31-1225-00	RM339	WB, Multiplex, ELISA
H3K27cr	31-1287-00	RM401	WB, Multiplex, ELISA

## Histone Dual-Modification Antibodies

Product Name	Catalog No.	Clone	Application
H3K9me2/ H3K14ac	31-1207-00	RM322	WB, Multiplex, ELISA
H3K9me3/ H3S10ph	31-1097-00	RM162	WB, Multiplex, ELISA

## Histone Methylation Antibodies

Product Name	Catalog No.	Clone	Application
H3K4me	31-1046-00	RM140	WB, ChIP, ICC, Multiplex, ELISA
H3K4me2	31-1037-00	RM135	WB, ChIP, ICC, Multiplex, ELISA
H3K4me3	31-1039-00	RM137	WB, Multiplex, ICC, ELISA
H3K4me3	31-1226-00	RM340	ChIP, Multiplex, ELISA
H3K9me	31-1064-00	RM150	WB, ChIP, ICC, Multiplex, ELISA
H3K9me2	31-1059-00	RM151	WB, ChIP, ICC, Multiplex, ELISA
H3K9me3	31-1275-00	RM389	WB, Multiplex, ELISA
H3K14me2	31-1060-00	RM165	WB, Multiplex, ELISA
H3K18me	31-1076-00	RM167	WB, Multiplex, ELISA
H3K18me2	31-1075-00	RM168	WB, Multiplex, ELISA
H3K23me2	31-1077-00	RM171	WB, Multiplex, ELISA
H3K27me3	31-1062-00	RM175	WB, ChIP, ICC, Multiplex, ELISA
H3K36me2	31-1047-00	RM141	WB, Multiplex, ELISA
H3K36me3	31-1051-00	RM155	WB, ChIP, Multiplex, ELISA
H3K56me	31-1095-00	RM180	WB, Multiplex, ELISA
H3K79me	31-1049-00	RM147	WB, ChIP, Multiplex, ELISA
H3K79me2	31-1065-00	RM181	WB, ChIP, ICC, Multiplex, ELISA
H3K79me3	31-1053-00	RM157	WB, Multiplex, ELISA
H4R3me	31-1080-00	RM195	WB, ICC, Multiplex, ELISA
H4K20me3	31-1096-00	RM208	WB, Multiplex, ELISA
H3 K4 (Unmodified)	31-1086-00	RM186	WB, Multiplex, ICC, ELISA

## Histone Phosphorylation Antibodies

Product Name	Catalog No.	Clone	Application
H2AX S139ph	31-1104-00	RM224	WB, ICC, Multiplex, ELISA
H2A/H4 S1ph	31-1092-00	RM216	WB, ICC, Multiplex, ELISA
H2B S14ph	31-1115-00	RM238	WB, ICC, Multiplex, ELISA
H3S10ph	31-1070-00	RM163	WB, ICC, Multiplex, ELISA
H3T3ph	31-1072-00	RM159	WB, ICC, Multiplex, ELISA
H3T6ph	31-1093-00	RM160	WB, Multiplex, ELISA
H3T11ph	31-1073-00	RM164	WB, Multiplex, ELISA
H4S1ph	31-1079-00	RM194	WB, ICC, Multiplex, ELISA

ORDER: ORDER@REVMAB.COM  
INQUIRY: INFO@REVMAB.COM

## Anti-Human Immunoglobulin Rabbit Monoclonal Antibodies

RevMAB has developed a full list of validated antibodies for detection of different human immunoglobulin (Ig) classes and subclasses. We offer immunoglobulin-specific ELISA kits enable accurate quantification of subclasses of human IgG.

### Feature Antibodies for Human Immunoglobulin

Product Name	Catalog No.	Clone	Application	Pack Size
Human Gamma Heavy Chain	31-1018-00	RM116	ELISA, IHC, ICC	100 ug
Human Kappa Light Chain	31-1028-00	RM126	ELISA, IHC, ICC, FC	100 ug
Human Lambda Light Chain	31-1029-00	RM127	ELISA, IHC, ICC, FC	100 ug
Human Ig Light Chain	32-1031-00	RM129	ELISA, IHC, ICC	100 ug
Human IgA ( $\alpha 1$ & $\alpha 2$ )	31-1030-00	RM128	ELISA, IHC, ICC, FC	100 ug
Human IgA1	31-1026-00	RM124	ELISA, IHC, ICC	100 ug
Human IgA2	31-1027-00	RM125	ELISA, IHC, ICC	100 ug
Human IgD	31-1025-00	RM123	ELISA	100 ug
Human IgE	31-1024-00	RM122	ELISA	100 ug
Human IgG1	31-1019-00	RM117	ELISA, IHC, ICC, FC	100 ug
Human IgG2	31-1020-00	RM118	ELISA, ICC	100 ug
Human IgG3	31-1021-00	RM119	ELISA, IHC, ICC	100 ug
Human IgG4	31-1022-00	RM120	ELISA, IHC, ICC, WB, FC	100 ug
Human IgG4 Fc	31-1100-00	RM217	ELISA	100 ug
Human IgM	31-1023-00	RM121	ELISA, IHC, ICC	100 ug

**Biotinylated antibodies are available !**

### Human Immunoglobulin Matched Antibody Pair Kits

Product Name	Catalog No.	Application
Human IgG1 Matched Antibody Pair Kit	31-1019-MK	ELISA
Human IgG2 Matched Antibody Pair Kit	31-1020-MK	ELISA
Human IgG3 Matched Antibody Pair Kit	31-1021-MK	ELISA
Human IgG4 Matched Antibody Pair Kit	31-1022-MK	ELISA

## Anti-Mouse/Rabbit Immunoglobulin Monoclonal Antibodies

RevMAb has developed a full list of validated and specific antibodies for detection of different mouse immunoglobulin (Ig) classes and subclasses. We provide goat monoclonal antibodies for detection of mouse/rabbit Fab and Fc regions on mouse/rabbit IgG which have no cross-reactivity with IgG from different species.

### Feature RABBIT Antibodies for Mouse Immunoglobulin

Product Name	Catalog No.	Clone	Application	Pack Size
Mouse IgG	31-1001-00	RM104	WB, ELISA	100 ug
Mouse IgG1	31-1002-00	RM106	WB, ELISA	100 ug
Mouse IgG2a	31-1098-00	RM219	WB, ELISA	100 ug
Mouse IgG2a Kappa Chain	31-1003-00	RM107	WB, ELISA	100 ug
Mouse IgG2b	31-1004-00	RM108	WB, ELISA	100 ug
Mouse IgG2c	31-1103-00	RM223	WB, ELISA	100 ug
Mouse IgG3	31-1094-00	RM218	WB, ELISA	100 ug
Mouse IgA	31-1099-00	RM220	WB, ELISA	100 ug
Mouse IgM	31-1005-00	RM109	WB, ELISA	100 ug
Mouse Ig Kappa Light Chain	31-1007-00	RM103	WB, ELISA	100 ug

**Biotinylated antibodies are available !**

### Feature GOAT Antibodies for Mouse/Rabbit Immunoglobulin

Product Name	Catalog No.	Clone	Application	Pack Size
Rabbit IgG Fab	41-1014-00	RMG01	WB, ELISA	100 ug
Rabbit IgG Fc	41-1015-00	RMG02	WB, ELISA	100 ug
Rabbit IgG	42-1030-00	RMG03	WB, ELISA	100 ug
Mouse IgG Fab	41-1043-00	RMG05	WB, ELISA	100 ug
Mouse IgG Fc	41-1044-00	RMG06	WB, ELISA	100 ug
Mouse IgG	41-1045-00	RMG07	WB, ELISA	100 ug

**Biotinylated antibodies are available !**



## Rabbit Monoclonal Tag and Control Antibodies

RevMAB has developed high-quality antibodies for detection of tag epitopes and housekeeping proteins that are compatible with most popular immunoassay. We offer a human chimeric version of anti-His/HA tag antibody and Biotin-conjugated antibody validated in a variety of applications.

### Epitope Tag Rabbit Monoclonal Antibodies

Product Name	Catalog No.	Clone	Application	Pack Size
His-Tag (6x or 10x)	31-1048-00	RM146	WB, IHC, IP, ICC, FC	100 ug
HA-Tag	31-1190-00	RM305	WB, IHC, IP, ICC, FC	100 ug
His-Tag Chimeric Human	54-1161-00	RMH01	ELISA, WB	100 ug
Ha-Tag Chimeric Human	54-1191-00	RMH02	ELISA, WB	100 ug
Biotin His-Tag	31-1048-02	RM146	WB, IHC, IP, ICC, FC	50 ug
Biotin HA-Tag	31-1190-02	RM305	WB, IHC, IP, ICC, FC	50 ug

### Loading Control Rabbit Monoclonal Antibodies

Product Name	Catalog No.	Clone	Application	Pack Size
$\alpha$ -Tubulin	31-1016-00	RM113	WB, IHC, IP, ICC, FC	100 ug
$\beta$ -Actin	31-1013-00	RM112	WB, IHC, IP, ICC, FC	100 ug
GAPDH	31-1017-00	RM114	WB, IHC, IP, ICC, FC	100 ug
Histone H3	31-1057-00	RM188	WB, ICC, ELISA, Multiplex	100 ug
Loading control Sampler Kit	31-1016-MK	RM113 RM112 RM114 RM188	WB, IHC ICC, FC, ELISA, IP	25 ug/each
Biotin $\alpha$ -Tubulin	31-1016-02	RM113	WB, IHC, IP, ICC, FC	50 ug
Biotin $\beta$ -Actin	31-1013-02	RM112	WB, IHC, IP, ICC, FC	50 ug
Biotin GAPDH	31-1017-02	RM114	WB, IHC, IP, ICC, FC	50 ug