

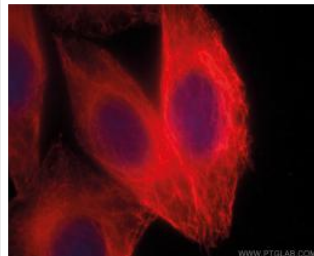
CoraLite

Fluorescent-dye conjugated antibodies

For more information visit www.ptglab.com

Antibody Name
Alpha Tubulin
Catalog Number
CL594-66031

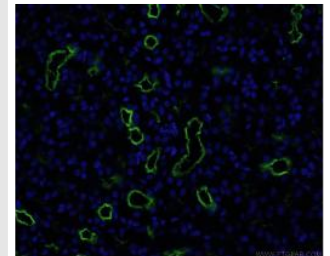
React Species
**Human, Mouse,
Rat, Dog**
Applications
ELISA, IF



Immunofluorescent analysis of (-20°C Ethanol) fixed HepG2 cells using CL594-66031 (alpha Tubulin antibody) at dilution of 1:100.

Antibody Name
CD13
Catalog Number
CL488-66211

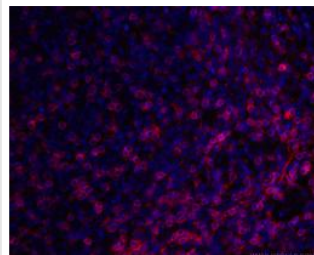
React Species
Human
Applications
ELISA, IF



Immunofluorescent analysis of (4% PFA) fixed mouse kidney tissue using CL488-66211 (CD13 antibody) at dilution of 1:100.

Antibody Name
CD3
Catalog Number
CL594-60181

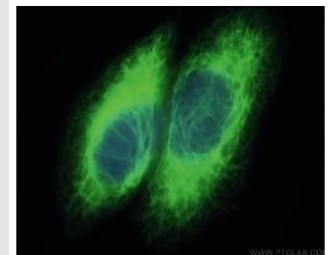
React Species
Human,
Applications
ELISA, IF



Immunofluorescent analysis of (4% PFA) fixed human tonsillitis tissue using CL594-60181 (CD3 antibody) at dilution of 1:100.

Antibody Name
Cytokeratin 18
Catalog Number
CL488-66187

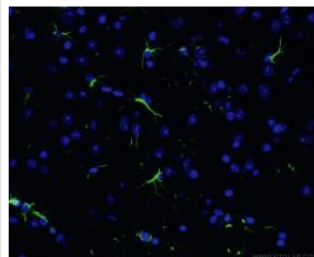
React Species
Human
Applications
ELISA, IF



Immunofluorescent analysis of (-20°C Ethanol) fixed HepG2 cells using CL488-66187 (Cytokeratin 18 antibody) at dilution of 1:100.

Antibody Name
GFAP
Catalog Number
CL488-60190

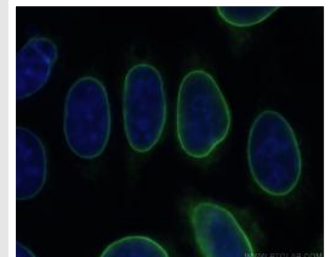
React Species
**Human, Mouse,
Rat, Pig**
Applications
ELISA, IF



Immunofluorescent analysis of (4% PFA) fixed mouse brain tissue using CL488-60190 (GFAP antibody) at dilution of 1:100.

Antibody Name
Lamin B1
Catalog Number
CL488-66095

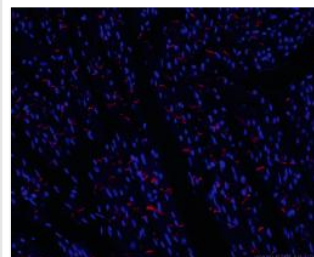
React Species
**Human, Mouse,
Rat**
Applications
ELISA, IF



Immunofluorescent analysis of (-20°C Ethanol) fixed HepG2 cells using CL488-66095 (Lamin B1 antibody) at dilution of 1:100.

Antibody Name
N-cadherin
Catalog Number
CL594-66219

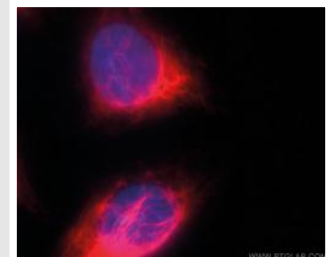
React Species
**Human, Pig,
Mouse, Rat**
Applications
ELISA, IF



Immunofluorescent analysis of (4% PFA) fixed mouse heart tissue using CL594-66219 (N-cadherin antibody) at dilution of 1:50 and N/A

Antibody Name
Vimentin
Catalog Number
CL594-60330

React Species
**human, Mouse,
Rat**
Applications
ELISA, IF



Immunofluorescent analysis of (-20°C Ethanol) fixed HepG2 cells using CL594-60330 (Vimentin antibody) at dilution of 1:100.

Coralite

Fluorescent-dye conjugated antibodies

Proteintech offers polyclonal and monoclonal primary antibodies in the most popular fluorescent conjugate forms for direct detection, avoiding the need for secondary reagents. Directly conjugated antibodies are precise and reliable tools for a broad range of research applications. Our new Coralite line of fluorescent conjugated antibodies allows faster and simultaneous detection of multiple targets in one experiment.

| Cat. No. | Antigen Name | Species Specificity | Applications |
|-------------|---------------------------|-----------------------------|--------------|
| CL594-66200 | Acetylated Tubulin(Lys40) | Human, Mouse, Rat, Dog, Pig | IF, ELISA |
| CL594-66031 | Alpha Tubulin | Human, Mouse, Rat, Dog | IF, ELISA |
| CL488-66379 | Beta-Catenin | Human, Mouse, Rat, Pig | IF, ELISA |
| CL488-66211 | CD13 | Human | IF, ELISA |
| CL594-66211 | CD13 | Human | IF, ELISA |
| CL488-60271 | CD20 | Human | IF, ELISA |
| CL594-66103 | CD22 | Human | IF, ELISA |
| CL594-60181 | CD3 | Human | IF, ELISA |
| CL488-66065 | CD31 | Human | IF, ELISA |
| CL488-66187 | Cytokeratin 18 | Human | IF, ELISA |
| CL594-66187 | Cytokeratin 18 | Human | IF, ELISA |
| CL488-60190 | GFAP | Human, Mouse, Rat, Pig | IF, ELISA |
| CL594-60190 | GFAP | Human, Mouse, Rat, Pig | IF, ELISA |
| CL594-14157 | KRAP/SSFA2 | Human, Rat, Mouse | IF, ELISA |
| CL488-66095 | Lamin B1 | Human,mouse, Rat | IF, ELISA |
| CL594-66095 | Lamin B1 | Human,mouse, Rat | IF, ELISA |
| CL488-66219 | N-cadherin | Human, Pig, Mouse, Rat | IF, ELISA |
| CL594-66219 | N-cadherin | Human, Pig, Mouse, Rat | IF, ELISA |
| CL488-60330 | Vimentin | Human, Mouse, Rat | IF, ELISA |
| CL594-60330 | Vimentin | Human, Mouse, Rat | IF, ELISA |