



Cloud-Clone Corp.

Primary Canine Cells

Assay Reagents / Testing Services / Diagnostic Reagents

14 years of technology accumulation

SPF-level Laboratory Animal Room

1,000+ primary cells



Primary Canine Articular Chondrocytes (AC) (CAT:CSI003Ca01)

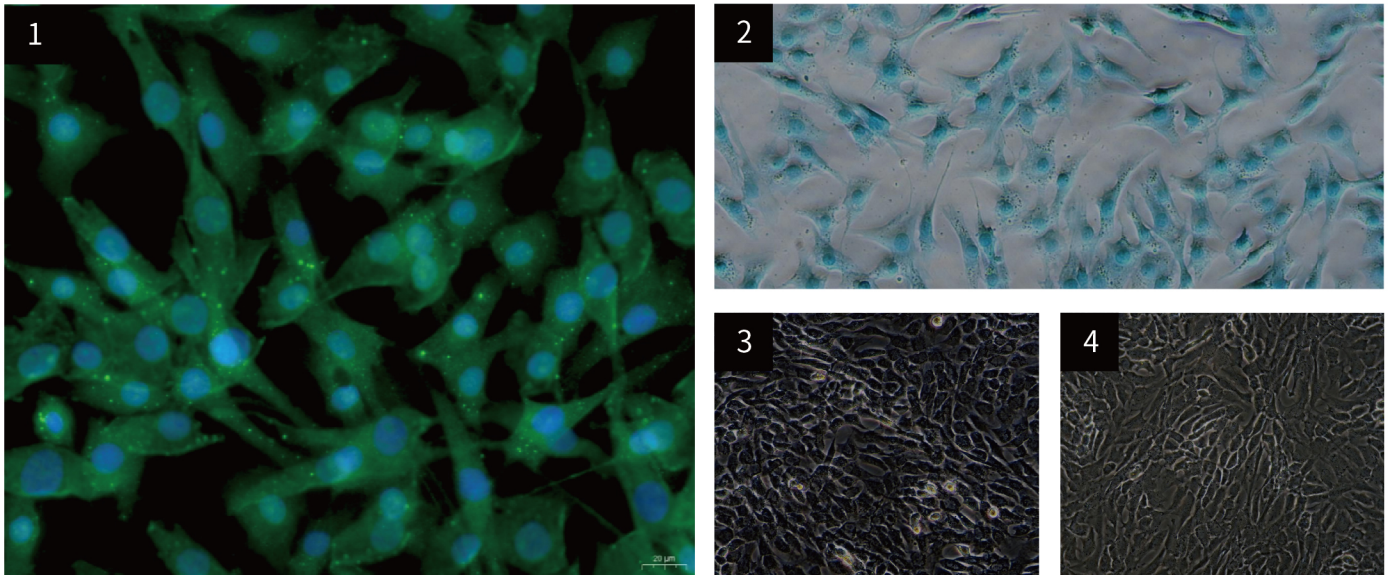


Figure 1 Immunofluorescence identification of collagen II specific antibody ($\times 400$)

Figure 2 Morphology of Canine Articular Chondrocytes (Alician blue staining, $\times 200$)

Figure 3 Morphology of P0 Canine Articular Chondrocytes (Optical microscope, $\times 200$)

Figure 4 Morphology of P1 Caprine Articular Chondrocytes (Optical microscope, $\times 200$)



Primary Canine Myocardial Cells (MC) (CAT:CSI007Ca01)

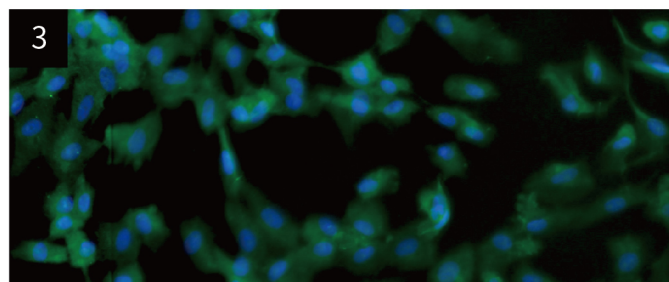
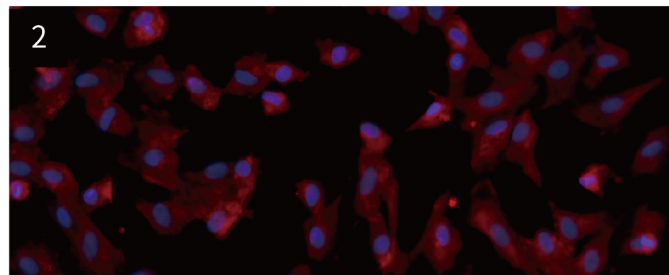
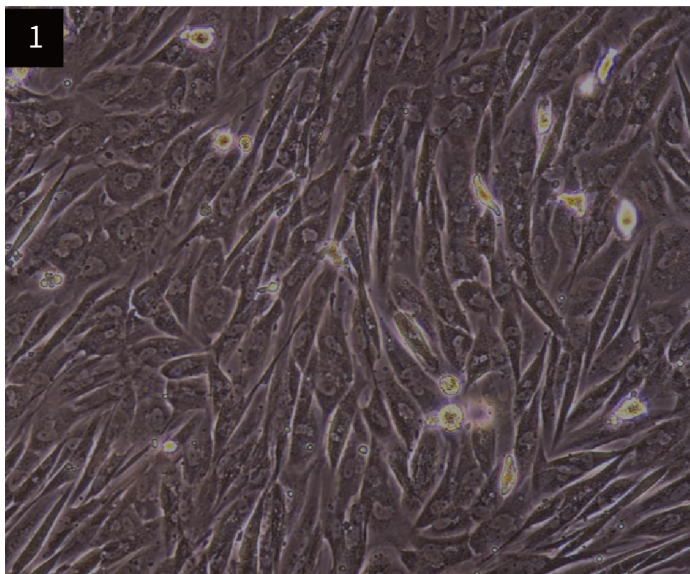


Figure 1 Morphology of Myocardial Cells (Optical microscope, $\times 200$)

Figure 2 Immunofluorescence identification of MYO1A specific antibody ($\times 400$)

Figure 3 Immunofluorescence identification of ACTC1 specific antibody ($\times 400$)



Primary Canine Renal Cortical Epithelial Cells (RCEC) (CAT:CSI067Ca01)

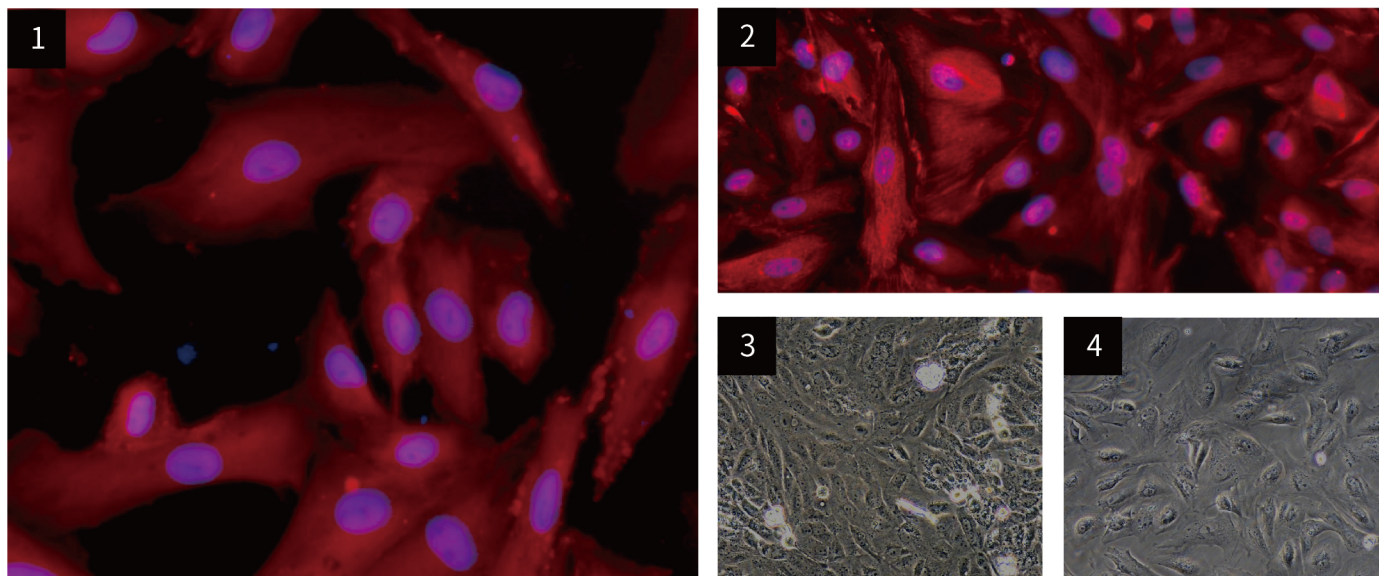


Figure 1 Immunofluorescence identification of ZO-1 specific antibody ($\times 400$)

Figure 2 Immunofluorescence identification of CK18 specific antibody ($\times 400$)

Figure 3 Morphology of P0 Canine RCECs (Optical microscope, $\times 200$)

Figure 4 Morphology of P1 Rabbit RCECs (Optical microscope, $\times 200$)



Primary Canine Subcutaneous Preadipocytes (SPrAD) (CAT:CSI032Ca01)

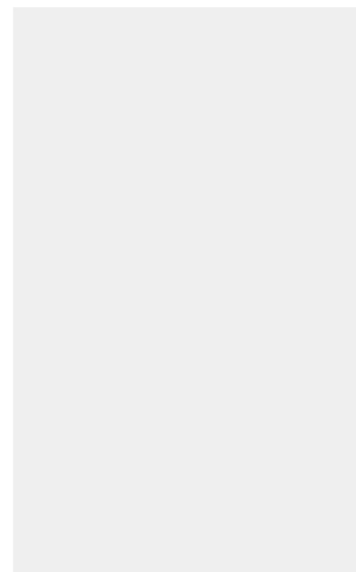
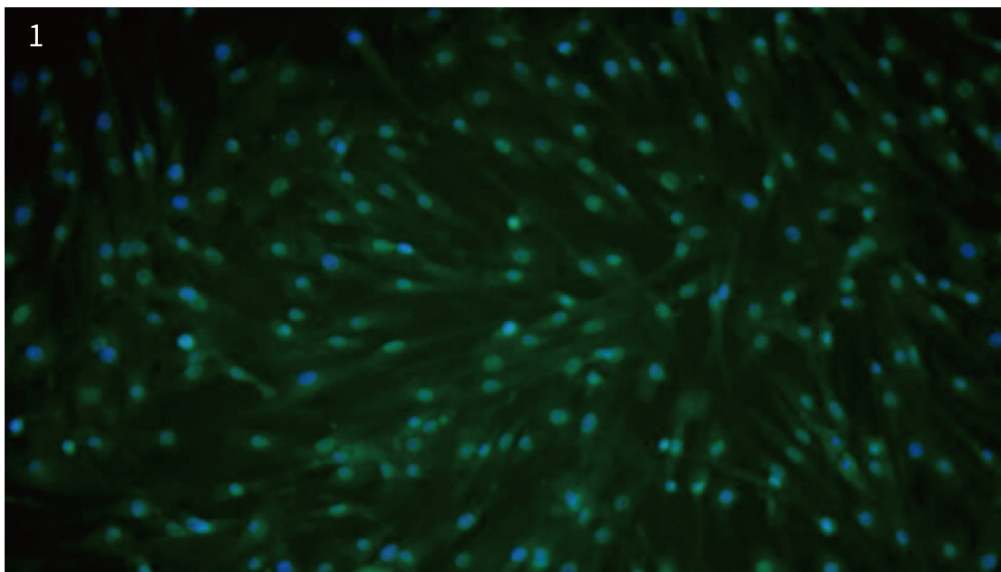
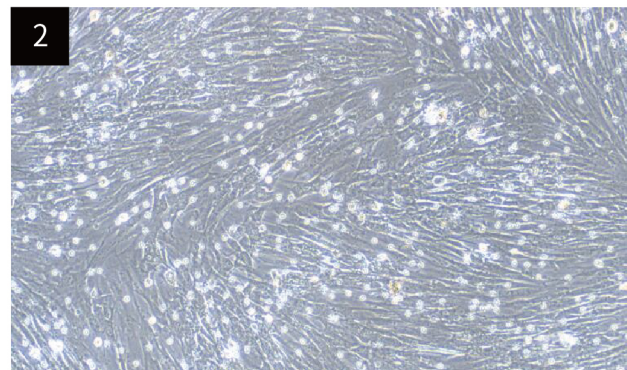


Figure 1 Subcutaneous Preadipocytes-Immunostaining for CD44
Figure 2 Primary Preadipocytes from canine





Primary Canine Osteoblasts (OB) (CAT:CSI102Ca01)

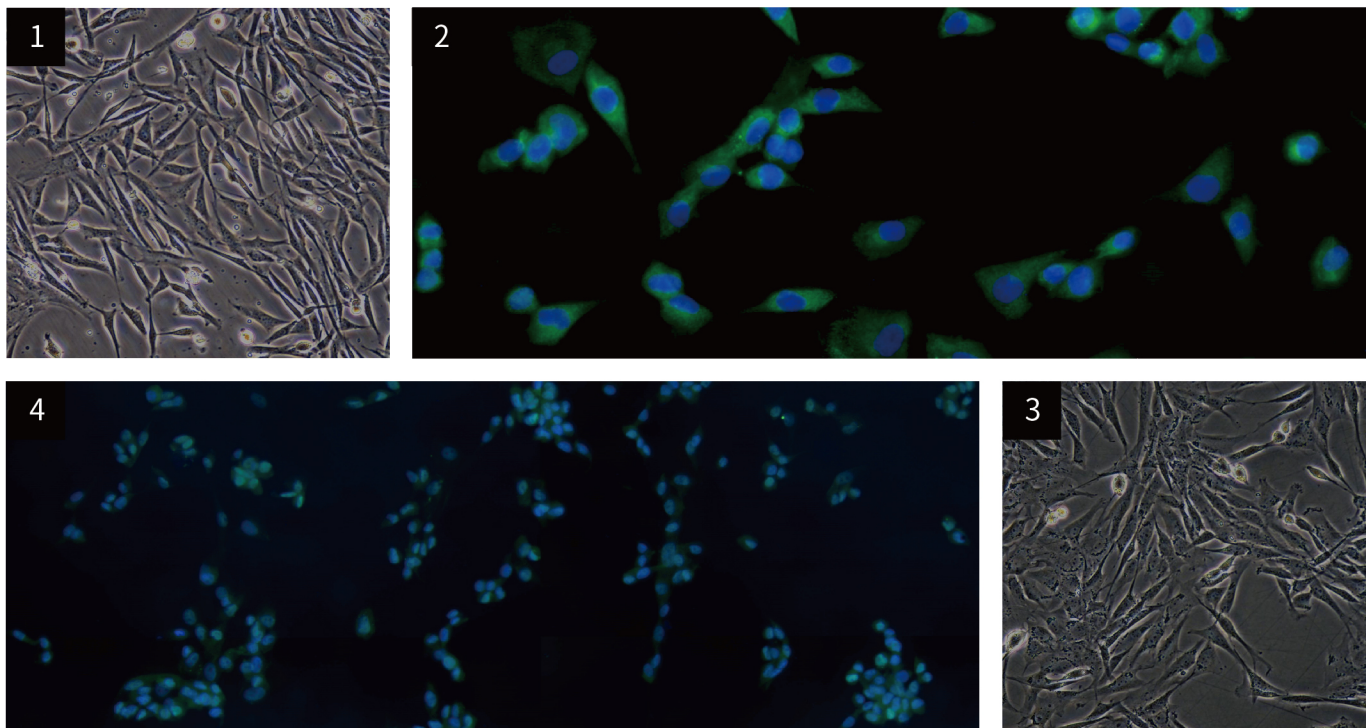


Figure 1 Morphology of P0 Canine Osteoblasts (Optical microscope, $\times 200$)

Figure 2 Immunofluorescence identification of COL1A1 specific antibody ($\times 400$)

Figure 3 Morphology of P1 Canine Osteoblasts (Optical microscope, $\times 200$)

Figure 4 Immunofluorescence identification of RUNX2 specific antibody ($\times 200$)



Primary Canine Bone Marrow-derived Mesenchymal Stem Cells (BMMSCs) (CAT:CSI083Ca01)

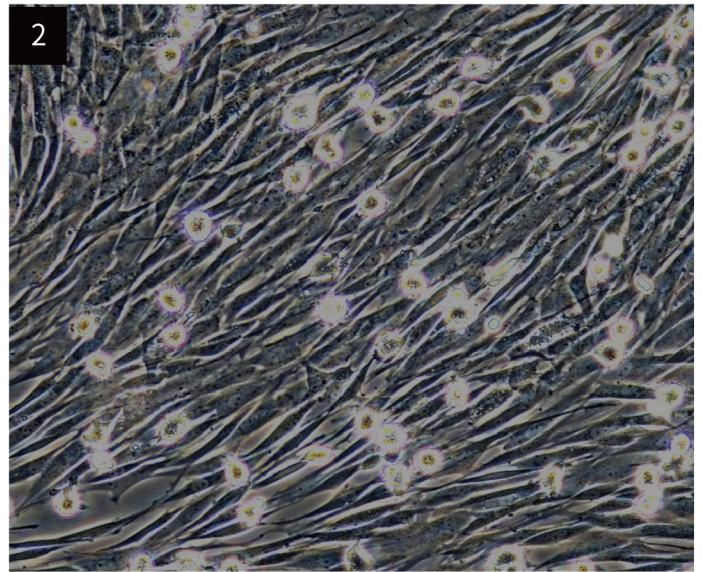
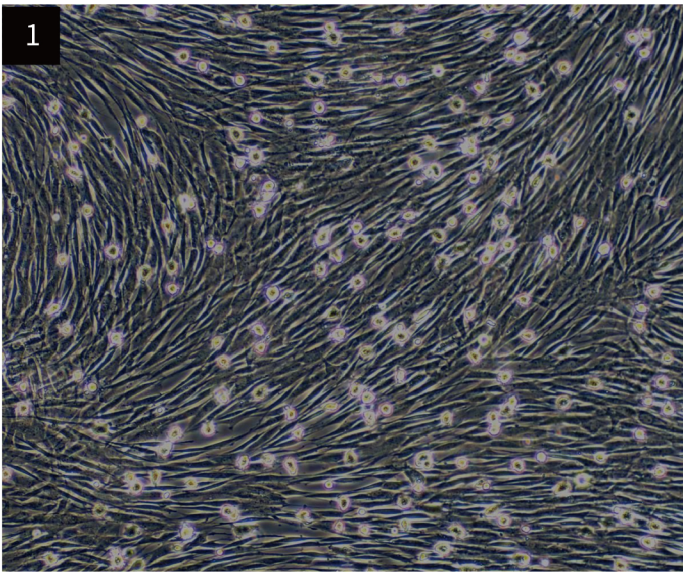


Figure 1 Morphology of P1 Canine BMMSCs (Optical microscope, $\times 100$)

Figure 2 Morphology of P1 Canine BMMSCs (Optical microscope, $\times 200$)



Primary Canine Esophageal Microvascular Endothelial Cells (EMEC) (CAT:CSI125Ca01)

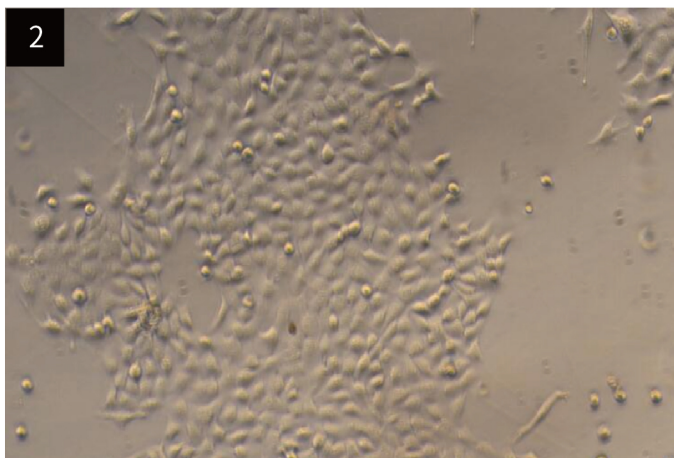
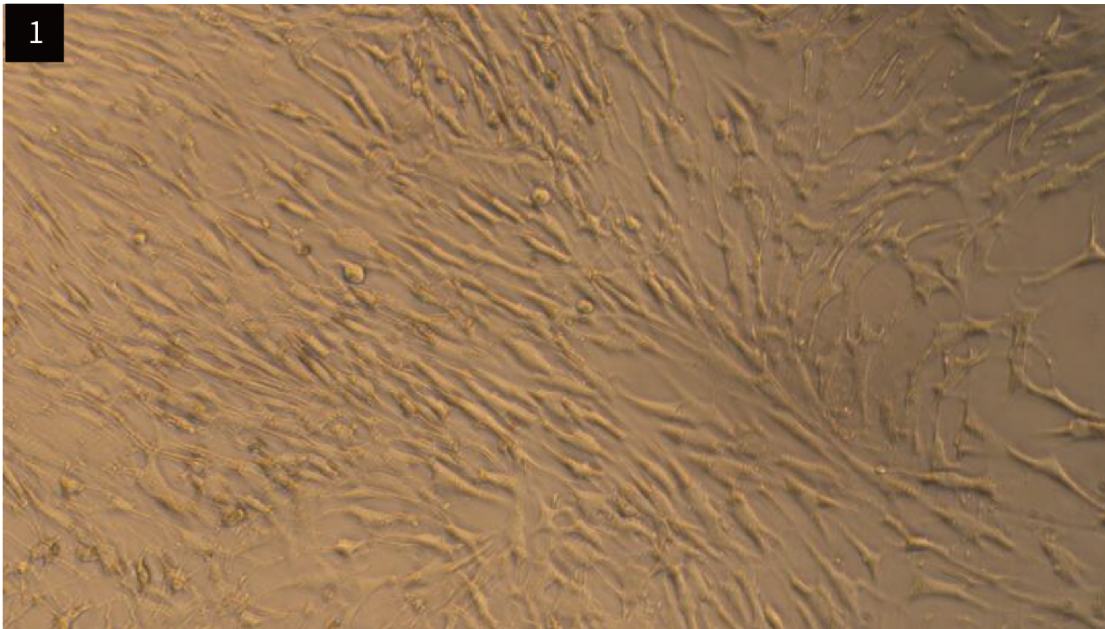


Figure 1 Esophageal Microvascular Endothelial Cells from canine phase contrast 200x

Figure 2 Esophageal Microvascular Endothelial Cells from canine phase contrast 200x



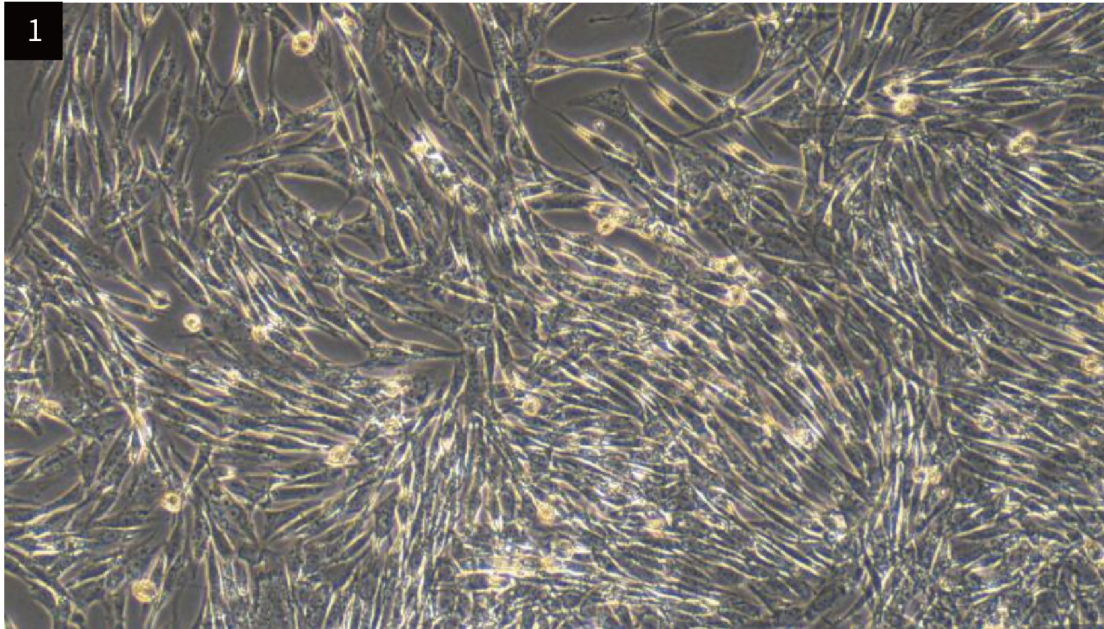
Primary Canine Esophageal Fibroblasts (EF) (CAT:CSI106Ca01)



■ Figure 1 Esophageal Fibroblasts from dog esophagus tissue



Primary Canine Pericardial Fibroblasts (PF) (CAT:CSI148Ca01)



■ Figure 1 Pericardial Fibroblasts from newborn dog heart



Primary Canine Cardiac Microvascular Endothelial Cells (CMEC) (CAT:CSI004Ca01)

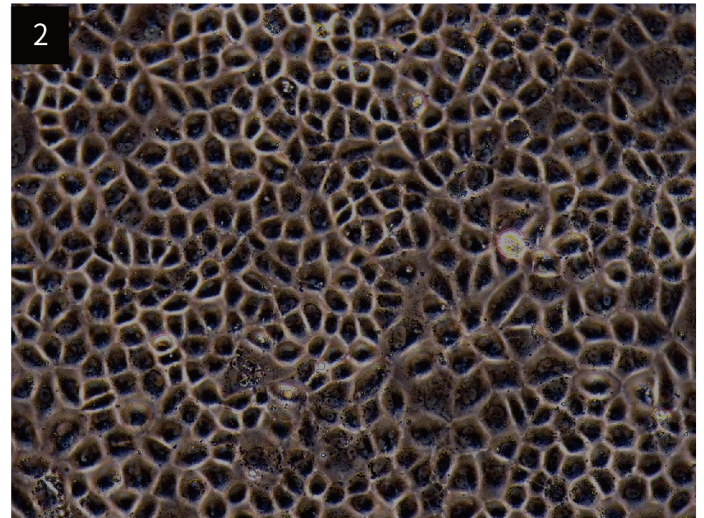
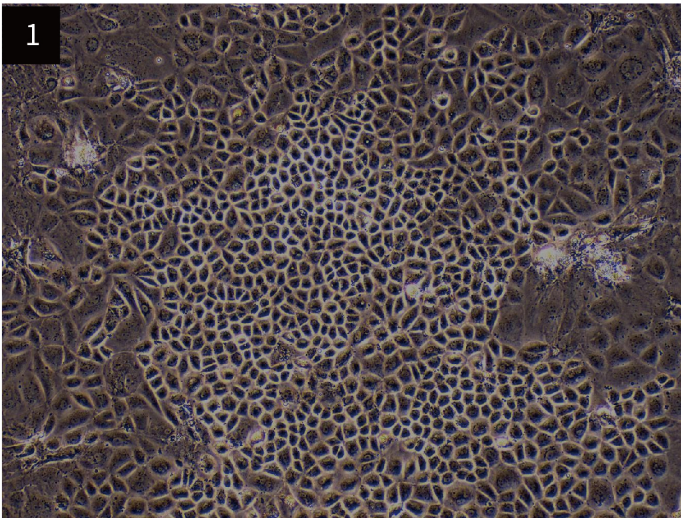


Figure 1 Morphology of Canine Cardiac Microvascular Endothelial Cells (Optical microscope, $\times 100$)

Figure 2 Morphology of Canine Cardiac Microvascular Endothelial Cells (Optical microscope, $\times 200$)



Primary Canine Pulmonary Fibroblasts (PF) (CAT:CSI034Ca01)

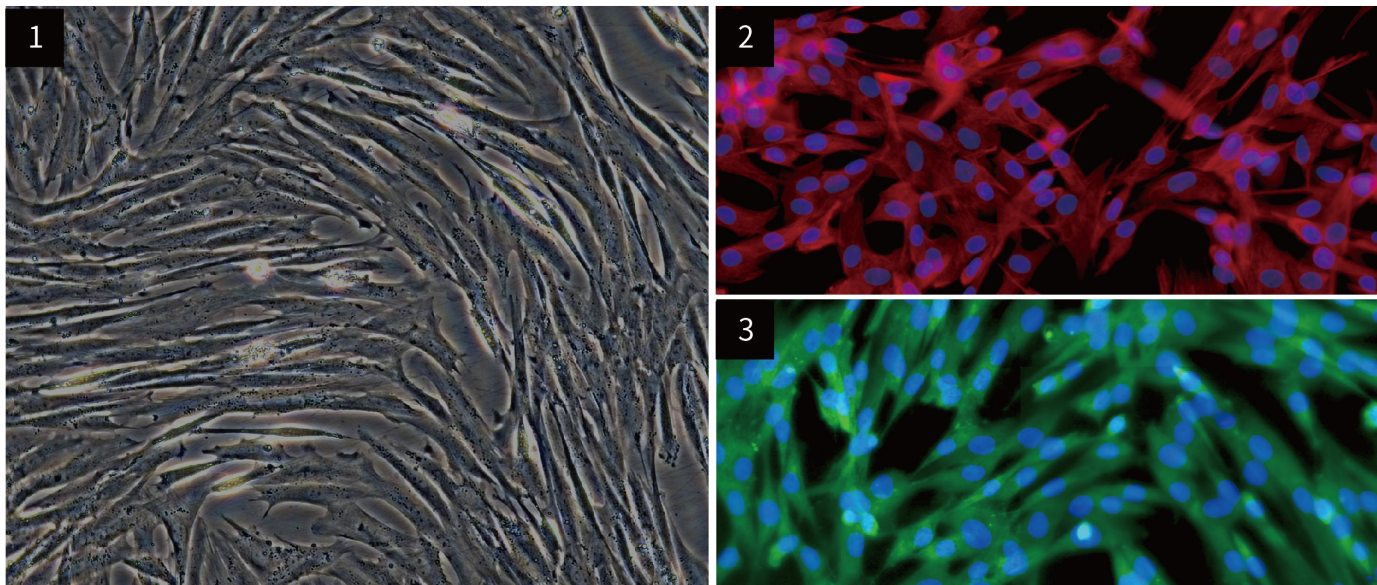


Figure 1 Morphology of Canine Pulmonary Fibroblasts (Optical microscope, $\times 200$)

Figure 2 Immunofluorescence identification of Vimentin specific antibody ($\times 400$)

Figure 3 Immunofluorescence identification of Fibronectin specific antibody ($\times 400$)



Primary Canine Skeletal Muscle Cells (SkMC) (CAT:CSI057Ca01)

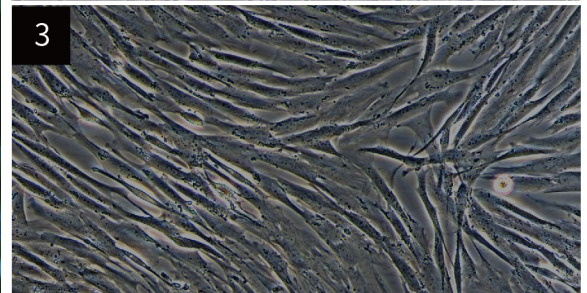
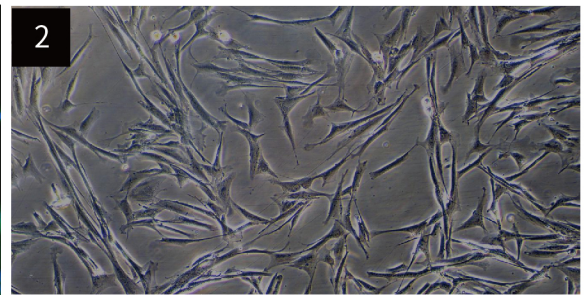
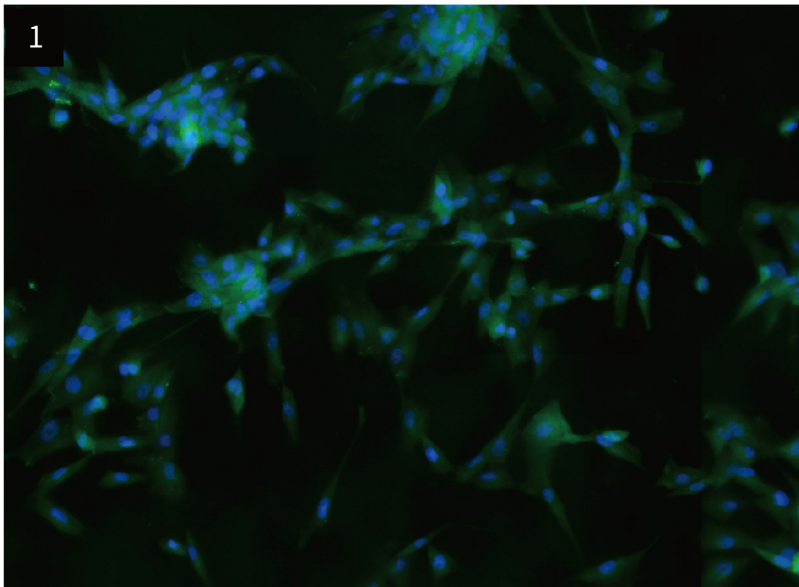


Figure 1 Immunofluorescence identification of MYO1A specific antibody ($\times 200$)

Figure 2 Morphology of Canine Skeletal Muscle Cells at low density (Optical microscope, $\times 100$)

Figure 3 Morphology of Canine Skeletal Muscle Cells at high density (Optical microscope, $\times 200$)



Primary Canine Bladder Stromal Fibroblasts (BSF) (CAT:CSI066Ca01)

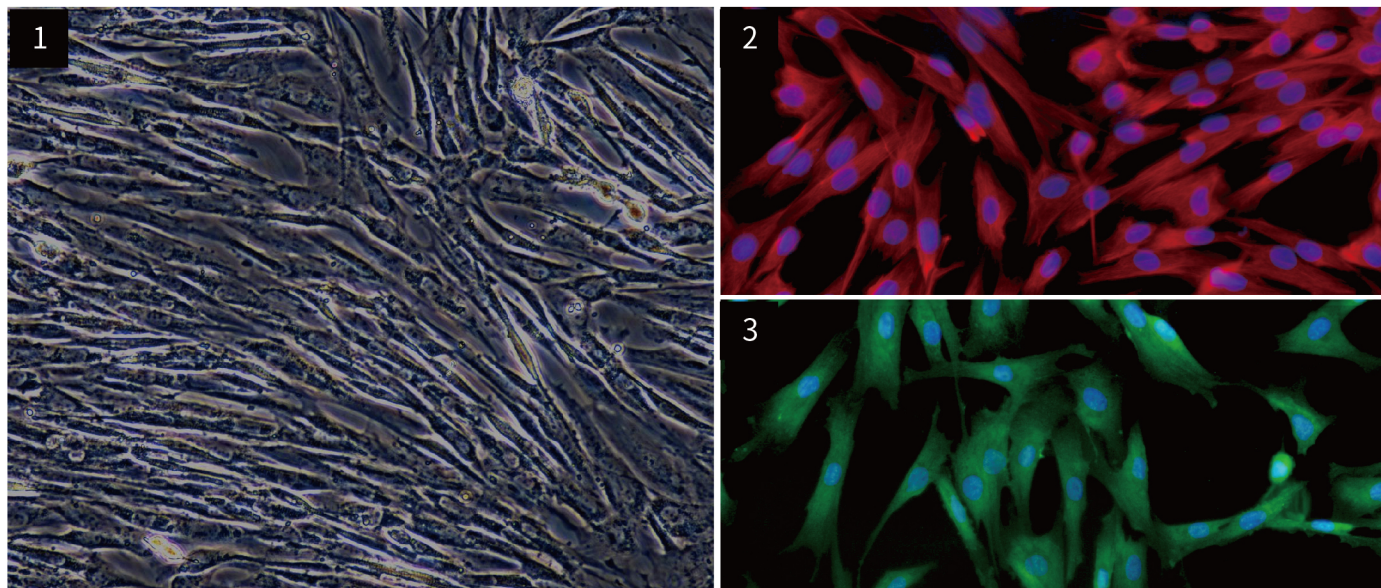


Figure 1 Morphology of Canine Bladder Stromal Fibroblasts (Optical microscope, $\times 200$)

Figure 2 Immunofluorescence identification of Vimentin specific antibody ($\times 400$)

Figure 3 Immunofluorescence identification of Fibronectin specific antibody ($\times 400$)

(For more informations, please visit: www.cloud-clone.com)

Cloud-Clone Corp.

Original Manufacturer for Assay Reagents, Testing Services and Diagnostic Reagents

23603 W. Fernhurst Dr., Unit 2201, Katy, TX 77494, USA

Tel: 001-832-538-0970 Toll free: 888-960-7402 (In the USA)

www.cloud-clone.com

www.cloud-clone.us