

FastGene® PAGE Protein System

Cat. No. PG01

With the FastGene® PAGE Protein System you get a complete package for protein analysis. The system impresses with robust, high-quality components and a unique and secure locking system.



Powerful analysis

PAGE (Polyacrylamide Gel Electrophoresis) is a common analytical method to determine the molecular weight of proteins. During PAGE, proteins migrate through a gel matrix in response to an applied electric field, leading to size dependent separation.

Have a look at contents and accessories of the PAGE Protein System on our website:

www.nippongenetics.eu



Components of the FastGene® PAGE Protein System gel electrophoresis set (PG01)



The FastGene® PAGE Protein System -
Electrophoresis tank and lid

All you need for PAGE

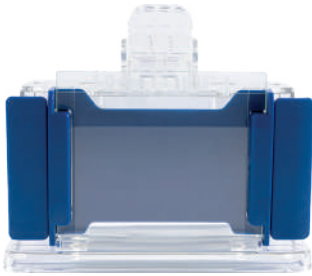
- ✓ Complete package for PAGE protein analysis
- ✓ 3 types of sealing strips ensure high compatibility with different precast gels
- ✓ Includes tube stand and glass plate holder
- ✓ Runs 1 to 4 gels with two electrophoresis chambers

Enjoy maximum security and flexibility

- ✓ Innovative, simple and secure locking system prevents buffer leakage
- ✓ Smart lid and tank design ensures the correct assembly of all PAGE components
- ✓ System compatible with 8x10 and 10x10 cm gels
- ✓ Use precast gels from different manufacturers: FastGene®, Bio-Rad™ or ThermoFisher™



The PAGE components are easy to use and enable a robust and secure set up



Gel hand-casting set - gel solution leakage is prevented by a tight locking mechanism

Pour gels - easy and successful

- ✓ Gel hand-casting set for casting 1 mm gels included
- ✓ Convenient and secure pouring of gels - without leakage!
- ✓ Glass spacer incorporated in glass plates
- ✓ Additional gel casting sets available for casting 0.75 mm or 1.5 mm gels.

Do you perform Western-Blot analysis?

Then gear up your FastGene® PAGE electrophoresis tank with the FastGene® Western-Blot components (PG09) and transform it into a powerful wet-blotting system!



Check out the FastGene® Western-Blot System on our website:



About us

NIPPON Genetics EUROPE is a Japanese-German Life-Tech company, focussing on the development of cutting edge products. We have over 30 years of experience in the life-science sector and want to provide the best service and solutions for your research requirements.

Need more information?

If you need more information, or have any questions about our systems, feel free to contact us. We also offer product demonstrations online or in your lab. Just arrange an appointment with us!

Visit our webpage: www.nippongenetics.eu

NIPPON Genetics EUROPE GmbH

+49 2421 554960 info@nippongenetics.eu
+49 2421 55496 11 www.nippongenetics.eu

LUBIO
SCIENCE

Your distributor in Switzerland

LubioScience GmbH
Baumackerstrasse 24
8050 Zürich
+41 (0)41 417 02 80

info@lubio.ch
www.lubio.ch

MK-FL-PGE-1.1

