

KRISHGEN BioSystems

OUR REAGENTS. YOUR RESEARCH.

**LUBIO
SCIENCE**

Your distributor in Switzerland

LubioScience GmbH
Baumackerstrasse 24
8050 Zürich

+41 (0)41 417 02 80

info@lubio.ch
www.lubio.ch

IMMUNO- ONCOLOGY ELISA

A RANGE SPECIFIC AND SENSITIVE
ASSAYS TO MEASURE AND MONITOR
POPULAR PROTEIN TARGETS.

**Human, Rat, Mouse and other Animal ELISA
& mAb Drug Assays for PK / ADA studies**

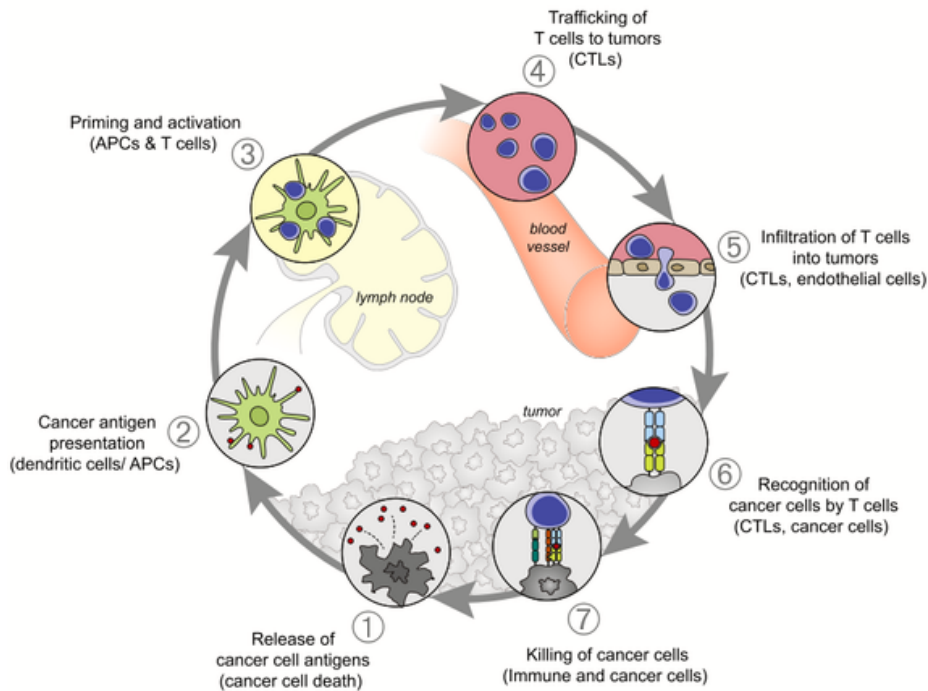
Learn more about our products:

www.krishgen.com
info@krishgen.com



Recent breakthroughs in immuno-oncology research translate into a paradigm shift with regards to attacking advancing cancer. The benefits of immuno-oncology have resulted in long-lasting tumor regression where surgery, radiotherapy, chemotherapy, and targeted therapy proved less effective.

As the cancer cycle continues, the number of tumor antigens released during cell death significantly increases, thereby strengthening the immune response of the T lymphocytes. Stimulatory factors promote immunity, whereas inhibitory checkpoint proteins, such as CTLA-4 and PD-L1, work at different steps of the cycle to reduce immune activity and, in this manner, also prevent autoimmune responses. A central goal of immuno-oncology therapy is to trigger the cancer-immunity cycle without harming non-tumorous cells.



The Cancer Immunity Cycle

Immuno-therapy approaches for the treatment of cancer fall into the following main categories:

- *Immune Checkpoint Inhibitors* - regulators of the immune system, and thus play an integral role in self-tolerance and antigen recognition of the T cell receptors in the process of immune response.
- *Monoclonal antibodies* - that target specific tumor antigens for identification and killing.
- *Bispecific antibodies* - that can bind two targets simultaneously and can be designed to recruit and activate immune cells, to interfere with receptor signaling and inactivate signaling ligands, and to force association of protein complexes.
- *Therapeutic vaccines* - that boost the immune system and have the potential to treat cancer or prevent it from recurring after treatment.
- *Adoptive T-cell transfer* - that work on improving the immune system's anti-cancer response. One type of adoptive T-cell transfer is chimeric antigen receptor (CAR) T-cell therapy, which is used to treat certain blood cancers.

At Krishgen, our dedicated team is focused on identifying and prioritizing the most relevant targets and the latest mAb or bsAb drugs in the pipeline to provide cutting-edge assay solutions.

From target discovery to IVD or clinical phase analysis, we can support you at every stage of your IO research with the right products for your needs. To ensure the best performance when possible, we test and validate our products in the most relevant models in both healthy and diseased tissue and assays.

Krishgen's offers a range of highly validated checkpoint and immune marker ELISA, as well as mAb-based drug assays to enhance and accelerate research on the tumor microenvironment. Each kit is put through rigorous testing to ensure high precision, accuracy, sensitivity, and specificity. You can be confident that you will obtain reproducible results, day-after-day, and lot-after-lot.

High Quality Raw Materials

For superior, reliable results, Krishgen uses high quality, well validated monoclonal antibodies for our Biosimilars ELISA. Our proprietary in-house blockers, buffers, diluents and other reagents are designed to offer optimal noise:signal ratios in every lot.

Production in a ISO 13485 certified facility

Our manufacturing lab is ISO 13485 and CDSCO (India) certified, with Class 7 / Class 8 cleanrooms and Air Handling Units to reduce contamination. Automated plate coating lines and handling equipment further reduce lot variation.



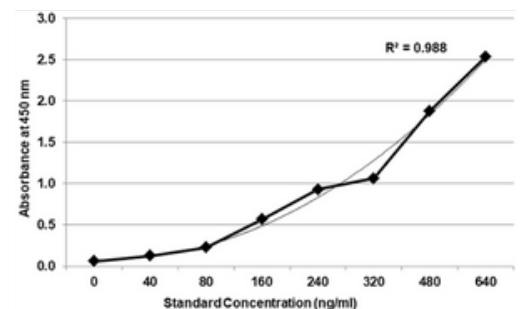
Stringent Validation

All Krishgen ELISA are subject to a stringent SOP for validation that includes the US FDA guidelines for bioassays. A seven-step protocol, each kit undergoes testing for lot-to-lot consistency, dilutional linearity and recovery, precision, stability and sensitivity.

Precision and Reproducibility

Strict quality control guidelines ensure reproducible results, lot after lot. Additionally, Krishgen ELISA clock in at CV<10%, with a recovery between 80 - 120% across all sample types.

For larger lots, we add additional QC steps to ensure inter-assay precision.



Flexible Sample Matrix

While the ready-to-use kits are validated for human serum and plasma samples, our team can optimise and validate any kit for your preferred sample type. Whether it's mouse serum or monkey plasma or anything else - let us know and we can validate it for you.

Trusted

Krishgen's reliable ELISA have been used in 1800+ peer-reviewed publications in journals around the world.

Other Available Products from Krishgen:

360+ Therapeutic Drug Monitoring / mAb-based ELISA for Pharmacokinetic research

40+ Bispecific Antibody Drug ELISA

Biomarker and Cytokine ELISA for Human, Rat, Mouse and 10+ other species

B7-CD28 Ligand-Receptor Family ELISA

Target Name	Species	Cat.No.	Other Species Available		Associated mAb drug ELISA			
			Mouse	Rat				
CTLA-4	Hu	KBH0277	●		Ipilimumab	Tremilimumab		
PD-1	Hu	KBBA50	●		Nivolumab	Pidilizumab	Pembrolizumab	Cemiplimab
PD-1H (VISTA) (B7-H5)	Hu	KBH2153						
PD-L1 (B7-H1)	Hu	KBBA52			Atezolizumab	Avelumab	Durvalumab	
PD-L2 (B7-DC)	Hu	KBH4206						
B7-H4	Hu	KBH6532						
CD28	Hu	KBH3033		●				
CD80 (B7-1)	Hu	KBH7878			Galiximab			
CD276 (B7-H3)	Hu	KBH7878			Ombrutamab			

Chemokines and Chemokine Ligands ELISA

Target Name	Species	Cat.No.	Other Species Available					
			Mouse	Rat	Porcine	Rabbit	Bovine	Others
CXCL5 (ENA-78)	Hu	KBH3443	●	●			●	
IL-8	Hu	KB1070	●	●	●	●		●
RANTES (CCL5)	Hu	KB1102	●	●			●	●

Cytokines and Cytokine Receptors ELISA

Target Name	Species	Cat.No.	Other Species Available					
			Mouse	Rat	Porcine	Rabbit	Bovine	Others
IFN γ	Hu	KB1053	●	●	●	●	●	●
IL-1b	Hu	KBH8054	●	●	●	●	●	●
IL2-R (CD122)	Hu	KBH0315	●	●				
IL-4	Hu	KBH8011	●	●	●	●	●	●
IL-6	Hu	KBH8009	●	●	●	●	●	●
IL-10	Hu	KBH8021	●	●	●	●	●	●
IL-12/IL-23 p40	Hu	KBH8019	●	●	●	●		●
IL-13	Hu	KBH8017	●	●	●	●	●	●
IL-21	Hu	KBH0057	●	●	●	●	●	●
MCP1 (CCL2)	Hu	KB1094	●	●	●	●	●	●
TSLP	Hu	KB1150	●	●				●

MHC Class I ELISA

Target Name	Species	Cat.No.	Other Species Available					
			Mouse	Rat	Porcine	Rabbit	Bovine	Others
Beta-2 Microglobulin (B2M)	Hu	KBH8021	●	●	●			●
MHC Class I	Hu	KBH0435			●			●

TIM Family ELISA

Target Name	Species	Cat.No.	Other Species Available					
			Mouse	Rat	Porcine	Rabbit	Bovine	Others
GAL9	Hu	KBH2998	●	●				
TIM-1 (KIM1)	Hu	KBH1099	●	●	●	●		●
TIM-3	Hu	KBH5390						

TNF and TNF-R Superfamily ELISA

Target Name	Species	Cat.No.	Other Species Available					
			Mouse	Rat	Porcine	Rabbit	Bovine	Others
TNF alpha	Hu	KB1145	●	●	●	●	●	●
CD154 (CD40L)	Hu	KBH3513	●	●	●	●		●
APRIL	Hu	KBH3444						
BAFF	Hu	KBH1967	●	●				
BCMA (TNFRSF17)	Hu	KBH6650	●					
CD137	Hu	KBH6343	●					
CD27 (TNFRSF7)	Hu	KBH5018						
CD40	Hu	KBH11145	●	●	●		●	●
CD70	Hu	KBH10975						
GITR (TNFRSF18)	Hu	KBH6339						
HVEM (TNFRSF14)	Hu	KBH6641						
OX40 (CD134)	Hu	KBH3356	●	●				
OX40L (TNFSF4)	Hu	KBH3845						
TNFRII	Hu	KBH10976						
TWEAK	Hu	KBH8952	●	●				

VEGF and VEGF Receptor ELISA

Target Name	Species	Cat.No.	Other Species Available					
			Mouse	Rat	Porcine	Rabbit	Bovine	Others
VEGF	Hu	KB1155	●	●	●	●	●	●
VEGFR2	Hu	KBH4535	●	●		●		●

Other Protein and Enzyme ELISA

Target Name	Species	Cat.No.	Other Species Available					
			Mouse	Rat	Porcine	Rabbit	Bovine	Others
Arginase 1	Hu	KBH4984	●	●				●
CD26	Hu	KBH3032	●	●				
CD73	Hu	KBH5056	●					
Granzyme B	Hu	KBH0899	●	●				
L Selectin	Hu	KBH5602	●	●				●
Perforin	Hu	KBH7989	●	●				
STAT3	Hu	KBH0650		●	●			

DIDN'T FIND WHAT YOU'RE LOOKING FOR?

Krishgen manufactures 20,000+ ELISA across more than 10 species. Talk to our technical team to find the right product for you at info@krishgen.com.

Or, get in touch with us to custom develop your assay. Our custom services can help designing and producing sensitive, validated kits for your target(s) of interest.

For more information, please reach out to us at services@krishgen.com.



Your distributor in Switzerland

LubioScience GmbH
Baumackerstrasse 24
8050 Zürich
+41 (0)41 417 02 80

info@lubio.ch
www.lubio.ch

KRISHGEN BioSystems

OUR REAGENTS. YOUR RESEARCH.