

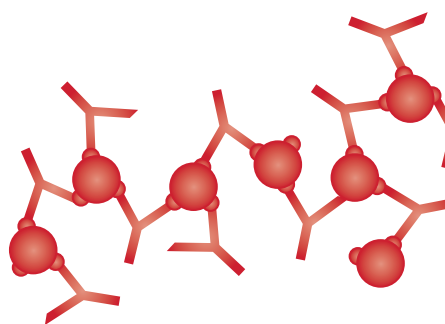


Detection of Human ABCB9 in prostate carcinoma by Immunohistochemistry. Anti-ABCB9 (Cat. No. IHC-00398) and goat anti-rabbit IgG, highly x-adsorbed, Antibody Hilyte Plus™ 555 (A120-501E).

Prostate Cancer Research Antibodies

Over 260 Antibodies For Studying Prostate Cancer

Cancer Research
Really Good Antibodies



bethyl.com

Prostate Cancer Research Antibodies

Bethyl Laboratories, Inc. is dedicated to improving lives by supporting scientific discovery through its qualified antibody products and custom antibody services. Since its founding in 1972, Bethyl has manufactured all of its antibodies on-site to exacting standards with validation to a wide range of applications.

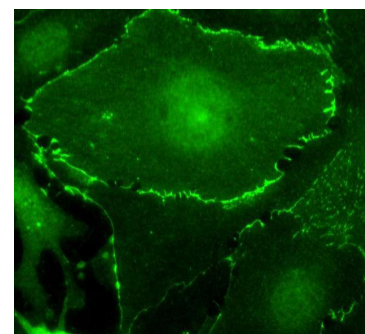
Below is a sampling of select antibodies targeted toward proteins involved in prostate cancer. For a complete product listing, please visit: bethyl.com/category/pca_research_cancer.

Target	Reactivities	Applications	# of Abs	AbVantage™ Pack
ACTL6A / BAF53A	Hu, Ms	WB, IF, IHC, PLA	2	
ARID1A / BAF250	Hu	WB	2	A310-338A
ATM	Hu, Ms	WB, IP, IF, IHC, PLA	6	A310-034A
ATR	Hu, Ms	WB, IP, PLA	3	A310-035A
BRCA1*	Hu	WB, IP, IF, IHC, PLA	12	A310-477A
CDK2	Hu, Ms	WB, IP, IF, IHC, PLA	2	
CDK4	Hu	WB, IP	2	A311-518A
CHEK1 / Chk1*	Hu, Ms	WB, IP, ICC, IF, IHC, PLA	6	A310-044A
CREB1 / CREB	Hu, Ms	WB, IP, IF, IHC, PLA	2	
EIF4EBP1 / 4EBP1	Hu, Ms, Rt, Pg	WB, IF, IHC	2	
ERBB2	Hu	WB, IP, IF, IHC, PLA	4	A310-183A
FKBP5 / FKBP51	Hu	WB, IP, IF, IHC	3	A310-497A
MAP2K1 / MEK1*	Hu	WB, IP, IF, IHC, PLA	5	A310-761A
MAPK1 / ERK2	Hu, Ms	WB, IF, IHC, PLA	2	
MAPK14 / p38 MAPK	Hu, Ms	WB, IP	2	A310-212A
MRE11A / Mre11	Hu, Ms	WB, IP, IF, IHC, PLA	3	
MSH2	Hu, Ms	WB, IP, IF, IHC, PLA	5	A310-127A
MSH6	Hu	WB, IP, IF, IHC, PLA	3	A310-004A
PLK1	Hu	WB, IP, ICC, IF, PLA	4	A310-069A
PRKDC / DNA-PKcs	Hu	WB, IP, IF, IHC, PLA	6	A310-147A
PTK2B / PYK2	Hu	WB, IP	2	A311-519A
PXN / Paxillin*	Hu, Ms	WB, IP, IF, IHC	4	A310-125A
RAD50	Hu, Ms	WB, IP, IF, IHC, PLA	3	A310-051A
RAPGEF1 / C3G	Hu	WB, IP	2	A310-696A
RELA*	Hu, Ms	WB, IP, IF, IHC, PLA	9	A310-650A
RICTOR	Hu, Ms	WB, IP, ICC, IF, IHC, F, PLA	7	A310-130A
RPTOR / Raptor	Hu, Ms, Rt	WB, IP, F	2	A310-161A
SMARCC2 / BAF170	Hu, Ms	WB, IP, IF, IHC	3	A310-337A
SMARCD1 / BAF60a	Hu	WB, IP	2	A310-565A
SP1	Hu, Ms	WB, IP, IF, IHC, PLA	4	A310-033A

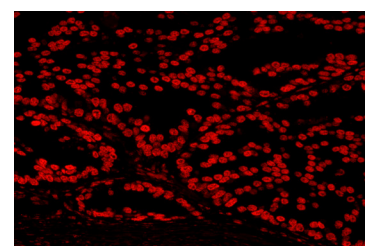
All antibodies are antigen affinity purified.
*Phospho-specific available

Select Journal Citations

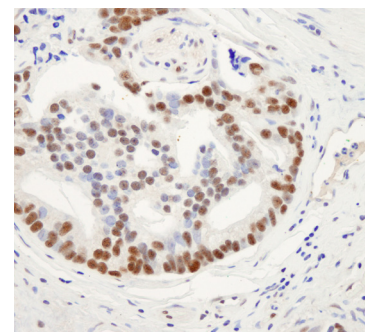
Target	Title	Journal
ACTL6A / BAF53A	Giessrigl B et al., Fulvestrant induces resistance by modulating GPER and CDK6 expression: implication of methyltransferases, deacetylases and the hSWI/SNF chromatin remodelling complex.	Br J Cancer. 2013 Nov 12;109(10):2751-62.
MYC / c-myc	Oh YS et al., SMARCA3, a Chromatin-Remodeling Factor, Is Required for p11-Dependent Antidepressant Action.	Cell. 2013 Feb 14;152(4):831-43
RICTOR	Dan HC et al., Regulation of mammalian target of rapamycin activity in PTEN-inactive prostate cancer cells by I kappa B kinase alpha.	Cancer Res. 2007 Jul 1;67(13):6263-9.



Human microvascular endothelial cells expressing c-myc tagged plakoglobin following transient transfection. Antibody: Affinity purified rabbit anti-c-myc (Cat. No. A190-105A) detected by FITC labeled goat anti-rabbit IgG (h+I).



Detection of Human Pds5B in prostate carcinoma by IHC-IF. Anti-Pds5B (Cat# IHC-00381).



Detection of Human TRAP150/THRAP3 in prostate adenocarcinoma by IHC. Anti-TRAP150/THRAP3 (Cat# IHC-00158).



We Make Every Antibody We Sell.

Montgomery, Texas | 800.338.9579 | bethyl.com



Your distributor in Switzerland

LubioScience GmbH
Baumackerstrasse 24
8050 Zurich

+41 41 417 02 80
info@lubio.ch
www.lubio.ch