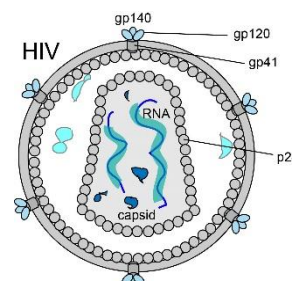


HIV surface protein gp120

Catalogue no.: Q1c
Quantity: 250µg
Product: VHH directed against HIV gp120

Target: HIV-1 is an enveloped RNA lentivirus from the retroviridae family ¹. The surface of virus expresses trimeric mushroom-shaped, HIV-1-Env glycoprotein complexes that facilitate virus uptake via interaction with CD4 and CCR5 or CXCR4 on host cells.⁴ Env is a glycosylated trimer of non-covalently linked gp120 (UniprotKB [Q9YXH5](#)) and gp41, formed upon proteolytic cleavage of the precursor gp160.⁵



Source: Recombinant monoclonal VHH (*Llama glama*), purified from *S.cerevisiae*. Immunization with recombinant proteins. Phage-display selection on captured recombinant protein using competitive or total elution.

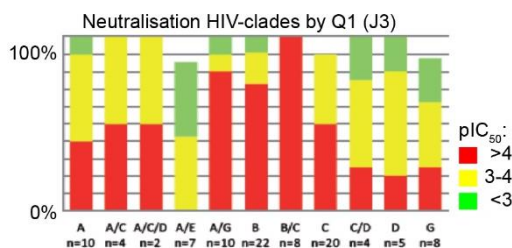
Specificity: Q1 binds to the CD4 binding site on gp120.⁶

Formulation: 0.2 µm filtered solution in PBS.
MW: 15.2 kDa, **Ext. Coeff. (ε)_{280nm}:** 24535 M⁻¹·cm⁻¹, **A₂₈₀ at 1g/L:** 1.62

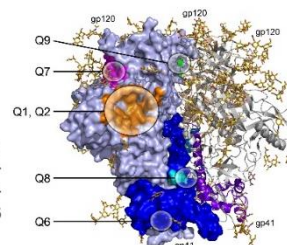
Storage: Store at 4°C or -20°C (aliquots).
 Addition of 0.02% sodiumazide is optional.

Applications: ELISA, virus neutralization.

Examples:



Broad HIV-1 neutralisation by Q1 (J3).⁶



References:

- [Ganser-Pornillos B.K.](#) et al. (2008) *Curr Opin Struct Biol* 18:203–217
- [Bell N.M. and Lever A.M.](#) (2013) *Trends Microbiol* 21:136–144
- [de Marco A. et al.](#), (2010) *PLoS Pathog* 6:e1001215
- [Tamamura et al.](#), (2005) *Curr HIV res* 3, 289-301
- [Hallenberger et al.](#), (1992) *Nature* 360, 358-361
- [McCoy et al.](#), (2012) *J Exp Med* 209, 1091-1103
- [Strokappe et al.](#), (2012) *PLoS One*, doi: 10.1371
- [Lutje Hulshik et al.](#), (2013) *PLoS Pathog*, doi: 10.1371