



Combining full portfolio of epitope and internal control antibodies, our broad selection of validated, promised CROWN primary antibodies are targeted to key research areas like cell signaling, neuroscience, cytoskeleton, cancer, and epigenetics.

CROWN Antibody

Ultra validation and promise



Product Table

Loading Control antibodies

- Product description 1
- Products list 2

“Crown” primary antibodies

- Signal Transduction 3
- Apoptosis 5
- Immunology 7
- Neuroscience 8
- Cytoskeleton 9
- Epigenetics 10
- Cardiovascular 12
- Cell Cycle 13
- Other antibodies 14

Epitope & tag antibodies

- Products list 15

Fluorescent secondary antibodies

- Dylight® antibodies 16
- IFKine™ antibodies 16

INTRODUCTION

Abbkine scientific professionals have been involved in researching, developing and manufacturing high performance immunoassays reagents for many years. We are delivering high quality products to scientists in the life science field. We are the trusted and dependable supplier to many of the international leading research institutes and clinical diagnostic companies.

With original manufacturing of more than 90% of our products, we are continuing the tradition of developing innovative antibodies to meet all of your research needs, and able to provide bulk quantities of most of our products at an economical price.

Abbkine “Crown” Antibodies

Selection

Our broad selection of validated, published and promised antibodies are targeted to key research areas like cell signaling, neuroscience, cytoskeleton, cancer, and epigenetics.

Trust

Enjoy complete confidence in your work with proven antibodies from the brands you trust, backed by our quality guarantee.

Expertise

Our knowledgeable technical support scientists are ready to help you with every aspect of your research, from antibody selection to troubleshooting.

More

Our most popular products are listed in this brochure, but you can see our complete selection by visiting Abbkine.com. Check back often – Abbkine is constantly developing new antibodies to novel targets.

Reactivity Key

H-Human, M-Mouse, R-Rat, Mk-Monkey, C-Chicken, Y-Yeast, Fi-Firefly, Pl-Plant, D-Dog, In-Insect, P-Pig, Rb-Rabbit,

Loading Control antibodies

Western blotting is a commonly used method to determine specific protein levels in a sample (e.g. tissue homogenate, extract). Loading control antibodies are important controls as they indicate the equal loading of samples across all wells. Loading controls also indicate the proper transfer of proteins to the membrane during the western blotting process.

Abbkine offers comprehensive portfolio of loading control monoclonal and polyclonal antibodies with high specific and mutple applications to meet and satisfy your most types of protein quantity and localization analysis. More loading control antibodies for other species and bulk size are available upon requests.



Did you even know ?

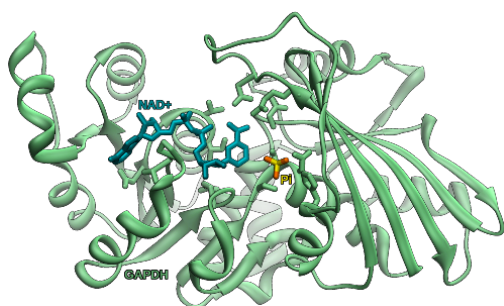
* GAPDH, beta actin and tubulin are listed as top 20 housekeeping genes with the highest and most consistent average expression , so each of them is commonly used as loading controls.

* For high molecular weight (over 100 kDa) proteins, we recommend Vinculin as a loading control.

* Make sure the molecular weight of loading control you choose is different from the protein of interest. This ensures you will be able to distinguish between the bands.

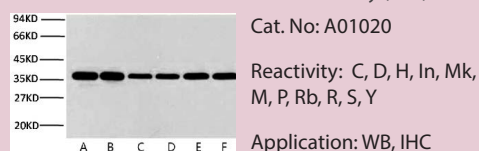
* We recommend loading 20–50 µg of total protein per lane on a mini gel. For most target proteins and model systems, this is optimal when probing with Abbkine antibodies.

* Some of these products are also available conjugated to HRP, which can be directly used as secondary antibodies.



GAPDH, less commonly as G3PDH, is the abbreviation of Glyceraldehyde 3-phosphate dehydrogenase. It is an enzyme of ~37kDa that catalyzes the sixth step of glycolysis and thus serves to break down glucose for energy and carbon molecules. GAPDH is considered as a housekeeping gene because this gene is often stably and constitutively expressed at high levels in most tissues and cells.

Anti-GAPDH Mouse Monoclonal Antibody (2B5)



Western blot analysis (1:10,000) of GAPDH expression in Rat brain (lane A), HeLa cell lysate (lane B), etc.

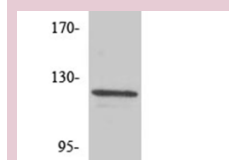
Loading Control Selection by Your Sample Type

Sample type	Loading control	Molecular weight
Whole cell / cytoplasmic	β-Actin	43 kDa
	GAPDH	37 kDa
	β-Tubulin	55 kDa
	α-Tubulin	55 kDa
	Cyclophilin B	24 kDa
	Cofilin	19 kDa
	Vinculin	116 kDa
Mitochondrial	COX IV	16 kDa
	HSP60	60 kDa
	VDAC1/Porin	31 kDa
Nuclear	PCNA	29 kDa
	Histone H3	15 kDa
	HDAC1	56 kDa
	Lamin B1	66 kDa
	TBP/TATA	38 kDa
Membrane	NaK ATPase	113 kDa
Serum	Transferrin	77 kDa



Product Name	Catalog #	Application
Anti-β-Actin Mouse Monoclonal Antibody (1C7)	A01010	WB, IHC
HRP Conjugated Anti-beta Actin Mouse Mab (1C7)	A01015	WB
Anti-GAPDH Mouse Monoclonal Antibody (2B5)	A01020	WB, IHC
HRP Conjugated Anti-GAPDH Mouse Mab (2B5)	A01025	WB
Anti-β-Tubulin Mouse Monoclonal Antibody (3G6)	A01030	WB, IHC
Anti-PCNA Mouse Monoclonal Antibody (1D7)	A01040	WB, IHC
Anti-Plant Actin Mouse Monoclonal Antibody (3T3)	A01050	WB
Anti-COX IV Mouse Monoclonal Antibody (14Y2)	A01060	WB
Anti-Histone H3 Mouse Monoclonal Antibody (2D10)	A01070	WB, IF, IP
Anti-α-Tubulin Monoclonal Antibody (3G5)	A01080	WB, IHC, IF, IP
Anti-Lamin B1 Monoclonal Antibody (15T1)	A01090	WB, IP
Anti-Histone H3 Monoclonal Antibody (2D9)	A01100	WB
Anti-Rubisco (Large Chain) Monoclonal Antibody (9Y6)	A01110	WB
Anti-TBP/TATA Binding Protein Mab (2C6)	A01120	WB
Anti-Cyclophilin B Monoclonal Antibody (7B2)	A01130	WB
Histone H3 Monoclonal Antibody (1G1)	ABM40038	WB, IHC, IF, IP
Cofilin Polyclonal Antibody	ABP51018	WB, IHC, IF
Histone deacetylase 1 Polyclonal Antibody	ABP51519	WB, IHC, IF
HSP60 Polyclonal Antibody	ABP51585	WB, IHC, IF
Na ⁺ /K ⁺ -ATPase α1 Polyclonal Antibody	ABP51894	WB, IHC, IF
Vinculin Polyclonal Antibody	ABP52701	WB, IHC, IF
Transferrin Polyclonal Antibody	ABP52968	WB, IHC
VDAC1 Polyclonal Antibody	ABP53121	WB

Vinculin Polyclonal Antibody



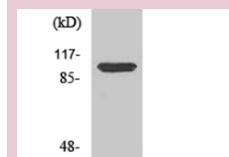
Cat. No: ABP52701

Reactivity: H, M, R

Application: WB, IHC, IF

Western blot analysis of Hela cells using Vinculin Polyclonal Antibody.

Na⁺/K⁺-ATPase α1 Polyclonal Antibody



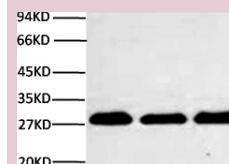
Cat. No: ABP51894

Reactivity: H, M, R

Application: WB, IHC, IF

Western blot analysis of 293 cells using Na⁺/K⁺-ATPase α1 Polyclonal Antibody diluted at 1: 1000.

Anti-PCNA Mouse Monoclonal Antibody (1D7)



Cat. No: A01040

Reactivity: H, M, R

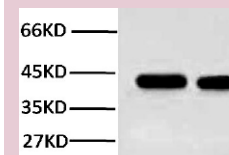
Application: WB, IHC

Western blot analysis of PCNA expression in Rat brain, A549 cell and NIH 3T3 cell, separately.

Loading control for unique species

Sample Species	Loading control	Catalog#
Plants	Plant Actin	A01050
	Rubisco (Large Chain)	A01110
Zebrafish	GAPDH	ABP50163
	β-actin	ABM40121
	α-tubulin	ABM40115
	Histone H3	A01100
Yeast	GAPDH	A01020
	β-tubulin	A01030
	Histone H3	A01070
Chicken & Monkey	β-actin	A01010
	GAPDH	A01020
	β-tubulin	A01030

Anti-Plant Actin Mouse Monoclonal Antibody (3T3)



Cat. No: A01050

Reactivity: PI

Application: WB

Western blot analysis of plant Actin expression in Arabidopsis (lane 1) and Nicotiana tabacum (lane 2).

Anti-Rubisco (Large Chain) Monoclonal Antibody



Cat. No: A01110

Reactivity: PI

Application: WB

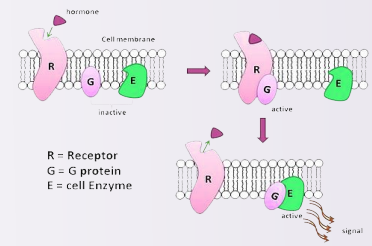
Western blot analysis of Arabidopsis with Rubisco antibody at 1:2000 and 1:5000 dilutions, separately.



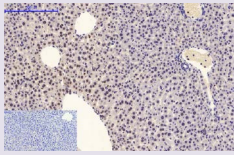
1. Signal Transduction

Signal transduction is the process of cell communication exterior to interior by the transmission of physical or chemical signals, most commonly protein phosphorylation, which result in a response. Cells detect various stimuli by proteins which are generally termed receptors. Receptors can interact with both external and internal molecules, triggering various signaling pathways. The signal pathways will form networks, to regulate and influence cellular functions.

Cutting edge immunogen peptide designing, synthesis and modification technology ensure your high performance signal transduction research. Abbkine provides more than 2000 kinds of related primary antibodies, which are widely used in research study and are popular with the customers.



ERK 1/2 (phospho Tyr222/205) Polyclonal Antibody



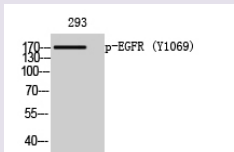
Cat. No: ABP50442

Reactivity: H, M, R

Application: WB, IHC, IF

Immunohistochemical analysis of paraffin-embedded Mouse liver tissue.

EGFR (phospho Tyr1069) Polyclonal Antibody



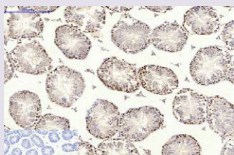
Cat. No: ABP54057

Reactivity: H, M, R, Mk

Application: WB

Western blot analysis of 293 cells using Phospho-EGFR (Y1069) Polyclonal Antibody diluted at 1: 1000.

AMPKα1/2 Polyclonal Antibody



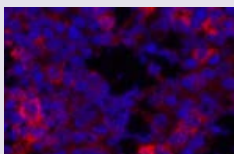
Cat. No: ABP50650

Reactivity: H, M, R, Mk

Application: WB, IHC

Immunohistochemical analysis of paraffin-embedded Mouse liver tissue.

HER2 Monoclonal Antibody



Cat. No: ABM40045

Reactivity: H, M, R

Application: WB, IHC, IF

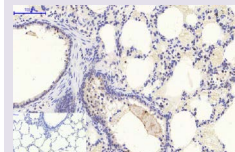
Immunofluorescence analysis of Mouse spleen tissue.

Product Name	Cat. No.	Reactivity	Application
ABCG2 Polyclonal Antibody	ABP53289	H	WB, IHC, IF
AMPKα1 Polyclonal Antibody	ABP50649	H, M, R	WB, IHC, IF
AMPKα1/2 (phospho Thr183/172) Pab	ABP50452	H, M, R, Mk	WB, IHC, IF
AMPKα1/2 Polyclonal Antibody	ABP50650	H, M, R, Mk	WB, IHC
Aquaporin 4 Monoclonal Antibody	ABM40062	H, M, R	WB, IHC, IF
AR Polyclonal Antibody	ABP53269	H, M, R	WB, IHC, IF
CaMKIIβ/γ/δ (phospho Thr287) Pab	ABP56646	H, M, R	WB, IHC, IF
c-Src Polyclonal Antibody	ABP51062	H, M, R	WB, IHC, IF
EGFR (phospho Tyr1069) Pab	ABP54057	H, M, R, Mk	WB
EGFR Polyclonal Antibody	ABP51241	H, M, R	WB, IHC, IF
eIF2α (phospho Ser51) Pab	ABP50305	H, M, R	WB, IHC, IF
eIF2α Polyclonal Antibody	ABP51245	H, M, R, Mk	WB, IHC, IF
ERK 1/2 (phospho Thr202) Pab	ABP50309	H, M, R	WB, IHC, IF
ERK 1/2 (phospho Thr202/Y204) Pab	ABP50531	H, M, R	WB, IHC, IF
ERK 1/2 (phospho Tyr204) Pab	ABP50310	H, M, R	WB, IHC, IF
ERK 1/2 (phospho Tyr222/205) Pab	ABP50442	H, M, R	WB, IHC, IF
ERK 1/2 Polyclonal Antibody	ABP51299	H, M, R	WB, IHC, IF
ERK1 Mouse Monoclonal Antibody (5E9)	ABM40328	H, M, R	IHC, IF
FH Monoclonal Antibody	ABM40073	H, M, R	WB, IHC, IF
FoxO1 Polyclonal Antibody	ABP54304	H, M, R	WB, IHC, IF
Glut1 Polyclonal Antibody	ABP51439	H, M, R	WB, IHC, IF
Glut4 Polyclonal Antibody	ABP53254	H, M, R	WB, IHC
GSK3α/β (phospho Tyr279/216) Pab	ABP50322	H, M, R	WB, IHC, IF
GSK3β (phospho Ser9) Pab	ABP50323	H, M, R	WB, IHC, IF, IP
GSK3β Polyclonal Antibody	ABP51488	H, M, R	WB, IHC, IF, IP
HER2 Monoclonal Antibody	ABM40045	H, M, R	WB, IHC, IF
HSP27 Polyclonal Antibody	ABP54788	H, M, R	WB, IHC, IF
HSP70 Monoclonal Antibody	ABM40042	H, M, R	WB, IHC, IF



Product Name	Cat. No.	Reactivity	Application
HSP90A Polyclonal Antibody	ABP51586	H, M, R	WB, IHC, IF
HSP90 β Monoclonal Antibody	ABM40130	H, M, R	WB, IHC, IF
JAK3 Polyclonal Antibody	ABP54977	H, M, R	WB, IHC, IF
JNK1/2/3 (phospho Thr183/Y185) Pab	ABP50351	H, M, R, C	WB, IHC, IF
JNK1/2/3 (phospho Tyr185) Pab	ABP50500	H, M, R	WB, IHC, IF
JNK1/2/3 Polyclonal Antibody	ABP51664	H, M, R	WB, IHC, IF
MEK-1/2 (phospho Ser218/222) Pab	ABP50356	H, M, R	WB, IHC
MEK-1/2 Polyclonal Antibody	ABP51773	H, M, R, Mk	WB, IHC, IF
MyD88 Polyclonal Antibody	ABP51872	H, M, R	WB, IHC, IF
MYPT1 (phospho Thr853) Pab	ABP55324	H, M, R	WB, IHC, IF
N/H/K-Ras Polyclonal Antibody	ABP51887	H, M, R	WB, IHC
p38 (phospho Thr180/Y182) Pab	ABP50432	H, M, R	WB, IHC, IF
p38 (phospho Tyr323) Pab	ABP50492	H, M, R	WB, IHC, IF
p38 Polyclonal Antibody	ABP53839	H, M, R	WB, IHC, IF
phospho-MLKL (S358) Mouse Mab (6F8)	ABM40324	H	IHC, IF
PI 3-kinase p110 α Polyclonal Antibody	ABP52198	H, M	WB, IHC, IF
PI 3-kinase p85 α Polyclonal Antibody	ABP52199	H, M, R	WB, IHC, IF
PI 3-kinase p85 α (phospho Tyr607) Pab	ABP50495	H, M, R, C	WB, IHC, IF
PI 3-kinase p85 α / γ Polyclonal Antibody	ABP52201	H, M, R, C, Mk	WB, IHC, IF
PKC Polyclonal Antibody	ABP52223	H, M, R	WB, IHC, IF
PKM2 Polyclonal Antibody	ABP52230	H, M, R	WB, IHC, IF
Raf-1 Polyclonal Antibody	ABP55988	H, M, R	WB, IHC, IF
Rho A Polyclonal Antibody	ABP52350	H, M, R	WB, IHC, IF
Rock-1 Polyclonal Antibody	ABP52388	H, M, R, Mk	WB, IHC, IF
SGK1 Polyclonal Antibody	ABP52432	H, M, R	WB, IHC, IF
Smad2/3 Polyclonal Antibody	ABP52462	H, M, R, Mk	WB, IHC
Smad3 (phospho Ser425) Pab	ABP50460	H, M, R	WB, IHC, IF
Smad3 Polyclonal Antibody	ABP52464	H, M, R	WB, IHC, IF
Smad4 Polyclonal Antibody	ABP55163	H, M, R, Mk	WB, IHC, IF
SOCS-1 Polyclonal Antibody	ABP52477	H, M, R	WB, IHC, IF
Stat1 (phospho Tyr701) Pab	ABP50405	H, M, R, Mk	WB, IHC, IF, IP
Stat1 Polyclonal Antibody	ABP52508	H, M, R	WB, IHC, IF
Stat3 (phospho Ser727) Pab	ABP50406	H, M, R, Mk	WB, IHC, IF, IP
Stat3 (phospho Tyr705) Pab	ABP50407	H, M, R	WB, IHC, IF, IP
Stat3 Polyclonal Antibody	ABP52512	H, M, R	WB, IHC, IF
Tak1 Polyclonal Antibody	ABP52556	H, M, R	WB, IHC, IF
Transferrin Monoclonal Antibody	ABM40152	H	WB, IHC, IF

Stat1 (phospho Tyr701) Polyclonal Antibody



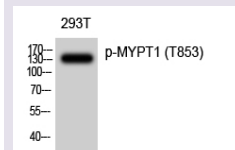
Cat. No: ABP50405

Reactivity: H, M, R, Mk

Application: WB, IHC, IF

Immunohistochemical analysis of paraffin-embedded Rat lung tissue

MYPT1 (phospho Thr853) Polyclonal Antibody



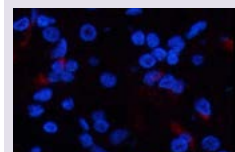
Cat. No: ABP55324

Reactivity: H, M, R

Application: WB, IHC, IF

Western blot analysis of 293T cells using Phospho-MYPT1 (T853) Polyclonal Antibody diluted at 1: 2000.

p38 (phospho Tyr323) Polyclonal Antibody



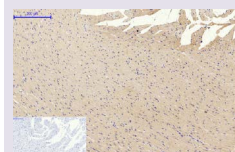
Cat. No: ABP50492

Reactivity: H, M, R

Application: WB, IHC, IF

Immunofluorescence analysis of human stomach tissue.

PI 3-kinase p85 α (phospho Tyr607) Pab



Cat. No: ABP50495

Reactivity: H, M, R, C

Application: WB, IHC, IF

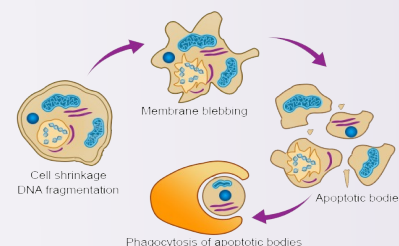
Immunohistochemical analysis of paraffin-embedded Rat heart tissue.



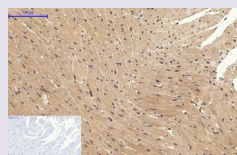
2. Apoptosis

Apoptosis is a programmed cell death, which is significant to many biological processes in multicellular organisms. During the process, characteristic cell changes occur, such as cell shrinkage, chromatin condensation, chromosomal DNA fragmentation. In contrast to necrosis, apoptosis is an autonomous and controlled behavior, regulating cell life and death. However, further research is still needed to explore its mechanisms.

Hyperimmunogenic and specific immunogen sequence designing guarantee you high quality apoptosis research tools. Abbkine offers apoptosis related "Crown" primary antibodies with ultra validations to satisfy your research requirements. Contact us for more apoptosis antibodies.



Bcl-x Polyclonal Antibody



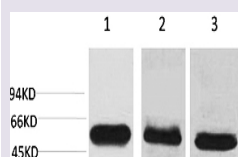
Cat. No: ABP50763

Reactivity: H, M, R

Application: WB, IHC, IF

Immunohistochemical analysis of paraffin-embedded Rat heart tissue.

Caspase-8 Monoclonal Antibody



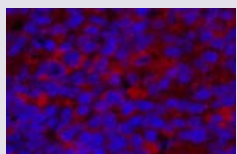
Cat. No: ABM40188

Reactivity: H, M, R

Application: WB, IHC, IF

Western blot analysis of 1) HeLa, 2) Mouse brain tissue, 3) Rat brain tissue using Caspase-8 Mab.

Caspase 9 Monoclonal Antibody



Cat. No: ABM40077

Reactivity: H, M, R

Application: WB, IHC, IF, IP

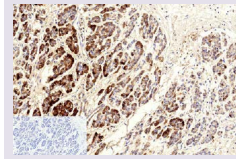
Immunofluorescence analysis of Rat spleen tissue.

Product Name	Cat. No.	Reactivity	Application
ASC Polyclonal Antibody	ABP50716	H, M, R	WB, IHC, IF
ATG5 Mouse Mab(3C7)	ABM40367	H, M, R	WB, IHC, IF
ATG7 Mouse Mab (3D6)	ABM40378	H, M, R	IHC, IF
Bad Polyclonal Antibody	ABP55880	H, M, R	WB, IHC, IF
Bax Mouse Monoclonal Antibody (6F11)	ABM40273	H, M, R	WB, IHC, IF
Bax Polyclonal Antibody	ABP55948	H, M, R	WB, IHC, IF
Bcl-2 Monoclonal Antibody	ABM40041	H, M, R	WB, IHC, IF
Bcl-2 Polyclonal Antibody	ABP57481	M, R	WB, IHC
Bcl-2 Polyclonal Antibody	ABP50760	H	WB, IHC, IF
Bcl-x Polyclonal Antibody	ABP50763	H, M, R	WB, IHC, IF
Caspase 9 Monoclonal Antibody	ABM40077	H, M, R	WB, IHC, IF, IP
Caspase-1 Polyclonal Antibody	ABP57468	H, R	WB, IHC, IF
Caspase-7 Polyclonal Antibody	ABP50023	H	WB, IHC, IF
Caspase-3 Polyclonal Antibody	ABP52935	H, M, R	WB, IHC, IF
Active Caspase-3 Monoclonal Antibody	ABM40197	H, M, R	WB, IHC, IF
Caspase-8 Monoclonal Antibody	ABM40188	H, M, R	WB, IHC, IF
Caspase-8 Polyclonal Antibody	ABP50858	H, M, R	WB, IHC, IF
Caspase-9 Polyclonal Antibody	ABP50861	H	WB, IHC, IF
Cleaved PARP Monoclonal Antibody	ABM40145	H	WB, IHC, IF
Cleaved-Caspase-1 (D210) Pab	ABP56676	H	WB, IHC, IF
Cleaved-Caspase-3 p12 (D175) Pab	ABP50002	H	WB, IHC, IF
Cleaved-Caspase-3 p17 (D175) Pab	ABP50003	H, M, R	WB, IHC, IF



Product Name	Cat. No.	Reactivity	Application
Cleaved-Caspase-8 (D384) Pab	ABP50008	H	WB, IHC, IF
Cleaved-Caspase-9 (D353) Pab	ABP50009	M, R	WB, IHC, IF
Cleaved-Caspase-9 p35 (D315) Pab	ABP50010	H	WB, IHC, IF
Cleaved-PARP-1 (D214) Pab	ABP50072	H, M	WB, IHC, IF
FAS Polyclonal Antibody	ABP51327	H	WB, IHC, IF
FAS-L Polyclonal Antibody	ABP51328	H, M	WB, IHC, IF
JAK1 (phospho Tyr1022) Pab	ABP50348	H, M, R	WB, IHC, IF
JAK1 Polyclonal Antibody	ABP51656	H, M, R	WB, IHC, IF
Lamin B1 Monoclonal Antibody	ABM40036	H, R, M	WB, IHC, IF, IP
Lamin B1 Polyclonal Antibody	ABP51698	H, M, R	WB, IHC, IF
Mcl-1 Polyclonal Antibody	ABP52891	H, M, R	WB, IHC, IF
NBR1 Mouse Mab(7C3)	ABM40366	H, M, R	IHC, IF
NFκB p65 Monoclonal Antibody	ABM40111	H, M, R	WB, IHC, IF, IP
NFκB-p105/p50 Polyclonal Antibody	ABP51948	H, M	WB, IHC, IF
NFκB-p105/p50 Polyclonal Antibody	ABP55377	H, M, R	WB, IHC, IF
NFκB-p65 (Acetyl Lys310) Pab	ABP50095	H, M	WB, IHC, IF
NFκB-p65 (phospho Ser276) Pab	ABP50369	H, M, R	WB, IHC, IF
NFκB-p65 (phospho Ser529) Pab	ABP50371	H, M, R, Mk	WB, IHC, IF
NFκB-p65 (phospho Ser536) Pab	ABP50373	H, M, R, Mk	WB, IHC, IF
NFκB-p65 Polyclonal Antibody	ABP56027	H, M, R	WB, IHC
Survivin Monoclonal Antibody	ABM40193	H, R	WB, IHC
Survivin Polyclonal Antibody	ABP54792	H, M, R	WB, IHC, IF

Cleaved-Caspase-9 (D353) Polyclonal Antibody



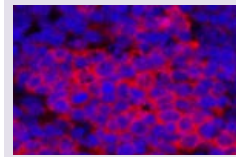
Cat. No: ABP50009

Reactivity: M, R

Application: WB, IHC, IF

Immunohistochemical analysis of paraffin-embedded Human stomach cancer tissue.

Cleaved-PARP-1 (D214) Polyclonal Antibody



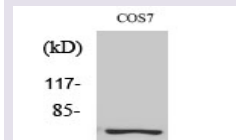
Cat. No: ABP50072

Reactivity: H, M

Application: WB, IHC, IF

Immunofluorescence analysis of Rat spleen tissue.

NFκB-p65 (phospho Ser529) Polyclonal Antibody



Cat. No: ABP50371

Reactivity: H, M, R, Mk

Application: WB, IHC, IF

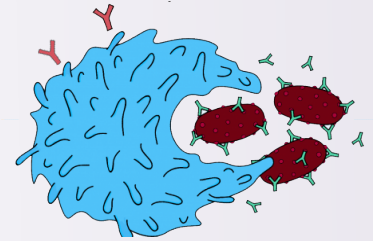
Western Blot analysis of COS7 cells using Phospho-NFκB-p65 (S529) Polyclonal Antibody diluted at 1:500.



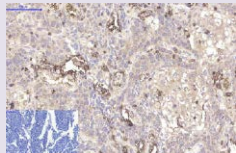
3. Immunology

Immunology is a vital research area of biology that covers the immune system studies of all organisms. Immunologic function includes Immunological defence, immune homeostasis and immunological surveillance. Immunology has applied to numerous fields, such as oncology, virology, bacteriology in nowadays.

Abbkine chooses synthetic peptides instead of full-length proteins as immunogen, which testifies better results in the research experiments like IHC and IF.



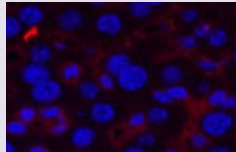
CD45 Monoclonal Antibody



Cat. No: ABM40046
 Reactivity: H
 Application: WB, IHC, IF

Immunohistochemical analysis of paraffin-embedded Human lung cancer tissue.

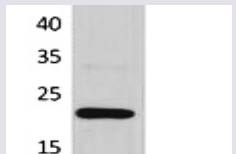
CD21 Monoclonal Antibody



Cat. No: ABM40060
 Reactivity: H, M, R
 Application: IHC, IF

Immunofluorescence analysis of Mouse liver tissue.

IL-6 Polyclonal Antibody



Cat. No: ABP53079
 Reactivity: H
 Application: WB, IHC

Western blot analysis of K562 cells using IL-6 Polyclonal Antibody.

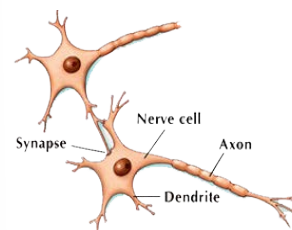
Product Name	Cat. No.	Reactivity	Application
CD1 Monoclonal Antibody	ABM40068	H, M, R	IHC, IF
CD10 Monoclonal Antibody	ABM40072	H, M, R	IHC, IF
CD15 Monoclonal Antibody	ABM40105	H	IHC, IF
CD16 Monoclonal Antibody	ABM40090	H	WB, IHC
CD2 Monoclonal Antibody	ABM40069	H, M, R	IHC
CD20 Monoclonal Antibody	ABM40048	H, M, R	IHC
CD21 Monoclonal Antibody	ABM40060	H, M, R	IHC, IF
CD23 Monoclonal Antibody	ABM40049	H, M, R	IHC, IF
CD25 Monoclonal Antibody	ABM40107	H	IHC
CD284 Polyclonal Antibody	ABP50903	H, M	WB, IHC, IF
CD4 Monoclonal Antibody	ABM40070	H, M, R	IHC, IF
CD44 Polyclonal Antibody	ABP50912	H, M, R	WB, IHC, IF
CD45 Monoclonal Antibody	ABM40046	H	WB, IHC, IF
CD5 Monoclonal Antibody	ABM40071	H, M, R	IHC, IF
CD68 Monoclonal Antibody	ABM40050	H, M, R	IHC, IF
CD81 Polyclonal Antibody	ABP53125	H, M, R	WB, IF
Cyclophilin B Monoclonal Antibody	ABM40220	H, M, R	WB, IHC, IF
IL-1 β Polyclonal Antibody	ABP52932	H, M, R	WB, IHC
IL-6 Polyclonal Antibody	ABP53079	H	WB, IHC
MICU1 Monoclonal Antibody	ABM40196	H, M, R	WB, IHC, IF
MIF Polyclonal Antibody	ABP51791	H, M, R	WB, IHC, IF
RANKL Polyclonal Antibody	ABP53135	H, M, R	WB, IHC
alpha Lactalbumin Mab	ABM40084	H	WB, IHC, IF
SDF-1 Polyclonal Antibody	ABP52415	H, M, R	WB, IHC, IF



4. Neuroscience

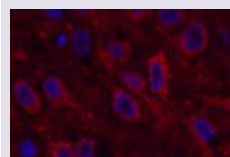
Neurobiology studies the nervous system of organisms, which deals with the anatomy, biochemistry, molecular biology, physiology of neurons and neural circuits. To prevent and treatment the neurological disorders better, current researchers strive to know the procedures of nervous system.

Abbkine provides high quality antibodies for your neurology study, and our antibodies are welcomed with customer researchers. Our most popular products are listed below, while you can check our complete selection by contacting us.



Product Name	Cat. No.	Reactivity	Application
Akt (phospho Ser473) Pab	ABP50256	H, M, R	WB, IHC, IF
Akt (phospho Thr308) Pab	ABP50464	H, M, R	WB, IHC, IF
Akt Polyclonal Antibody	ABP50636	H, M, R	WB, IHC, IF
Akt1 Polyclonal Antibody	ABP50631	H, M, R	WB, IHC, IF
Amyloid- β Polyclonal Antibody	ABP57479	H, M, R	WB, IHC, IF
AMACR Monoclonal Antibody	ABM40047	H, M, R	WB, IHC, IF
Cleaved-Notch 1 (V1754) Pab	ABP50051	H, M, R	WB, IHC, IF
Cleaved-Notch 2 (D1733) Pab	ABP50052	H, M, R	WB, IHC, IF
DRP1 Polyclonal Antibody	ABP51203	H, M, R	WB, IHC, IF
EFHD1 Monoclonal Antibody	ABM40085	H, M, R	WB, IHC, IF
Galectin-3 Monoclonal Antibody	ABM40043	H	WB, IHC, IF
GFAP Monoclonal Antibody	ABM40059	M, R	WB, IHC, IF
IDE Monoclonal Antibody	ABM40083	H	WB, IHC, IF
MAP2 Monoclonal Antibody	ABM40067	H, M, R	IHC, IF
NGF Polyclonal Antibody	ABP53296	H	WB, IHC
NOS2 Polyclonal Antibody	ABP51974	H, M, R	WB, IHC, IF
NOS3 Polyclonal Antibody	ABP55403	H, M, R	WB, IHC, IF
NSE Monoclonal Antibody	ABM40066	H, M, R	WB, IHC, IF
Synapsin I Polyclonal Antibody	ABP52532	H, M, R	WB, IHC, IF
Tau (phospho Ser396) Pab	ABP50413	H, M, R	WB, IHC, IF
TTR Mouse Monoclonal Antibody (1D7)	ABM40340	H	WB, IHC, IF

AMACR Monoclonal Antibody



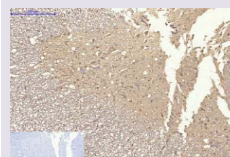
Cat. No: ABM40047

Reactivity: H, M, R

Application: WB, IHC, IF

Immunofluorescence analysis of Rat brain tissue.

Akt Polyclonal Antibody



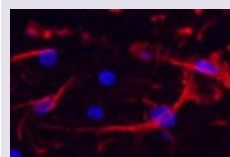
Cat. No: ABP50636

Reactivity: H, M, R

Application: WB, IHC, IF

Immunohistochemical analysis of paraffin-embedded Rat spinal cord tissue.

GFAP Monoclonal Antibody



Cat. No: ABM40059

Reactivity: M, R

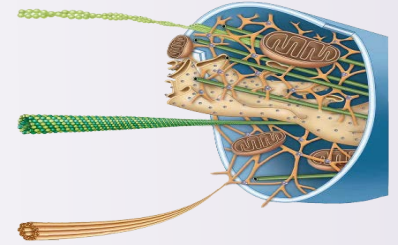
Application: WB, IHC, IF

Immunofluorescence analysis of Rat brain tissue.



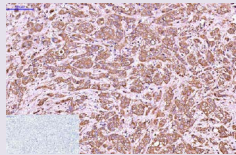
5. Cytoskeleton

Cytoskeleton exists in all cells in all kinds of living bodies, which is a network structure formed by fibrous proteins. It extends throughout the cytoplasm, giving the cell its morphology and mechanical resistance. The cytoskeleton can also actively contract, thereby deforming the cell and the cell's environment and allowing cells to migrate. The structure, function and dynamic behaviour of the cytoskeleton can be very diverse in different cells.



Abbkine's primary antibodies for cytoskeleton research demonstrate satisfactory results especially in immunohistochemistry and immunofluorescence experiments.

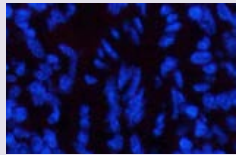
Cytokeratin 6 Monoclonal antibody



Cat. No: ABM40080
Reactivity: H
Application: WB, IHC, IF

Immunohistochemical analysis of paraffin-embedded Human breast cancer tissue.

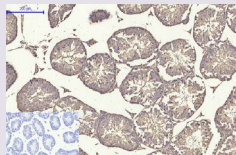
Epsilon Tubulin Mouse Monoclonal Antibody (3G1)



Cat. No: ABM40299
Reactivity: H, M, R
Application: IHC, IF

Immunofluorescence analysis of Mouse spleen tissue.

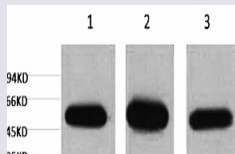
Tubulin α Polyclonal Antibody



Cat. No: ABP52655
Reactivity: H, M, R
Application: WB, IHC, IF

Immunohistochemical analysis of paraffin-embedded Mouse testis tissue.

β I tubulin Monoclonal Antibody



Cat. No: ABM40037
Reactivity: H, M, R
Application: WB, IHC, IF

Western blot analysis of 1) Hela, 2) Mouse brain tissue, 3) Rat brain tissue, diluted at 1:5000.

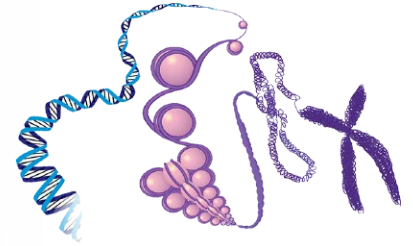
Product Name	Cat. No.	Reactivity	Application
CK16 Monoclonal Antibody	ABM40056	H, M, R	IHC, IF
CK17 Monoclonal Antibody	ABM40081	H	WB, IHC, IF, IP
CK7 Monoclonal Antibody	ABM40054	H, M, R	WB, IHC, IF, IP
CK8 Monoclonal Antibody	ABM40055	H, M, R	WB, IHC, IF
Claudin-5 Polyclonal Antibody	ABP50990	H, M, R	WB, IHC, IF
Collagen IV Mouse Mab (8E5)	ABM40371	H, M, R	IHC, IF
Connexin 43 Polyclonal Antibody	ABP51029	H, M, R	WB, IHC, IF
Cytokeratin 6 Monoclonal Antibody	ABM40080	H	WB, IHC, IF
Cytokeratin 18 Polyclonal Antibody	ABP51129	H, M, R	WB, IHC, IF, IP
Cytokeratin 19 Polyclonal Antibody	ABP51132	H, M, R	WB, IHC, IF
Desmin Monoclonal Antibody	ABM40221	H, M, R	IHC, IF
E-cadherin Polyclonal Antibody	ABP51221	H, M, R	WB, IHC, IF
Epsilon Tubulin Mouse Mab (3G1)	ABM40299	H, M, R	IHC, IF
Kif 7 Monoclonal Antibody	ABM40063	H, M, R	IHC, IF
Lamin A/C Polyclonal Antibody	ABP51696	H, M, R	WB, IHC, IF
LC3A Mouse Mab (5G10)	ABM40303	H, M, R	WB, IHC, IF
MAP LC3B Polyclonal Antibody	ABP57204	H, M, R	WB, IHC, IF
N-cadherin Polyclonal Antibody	ABP51903	H, M, R	WB, IHC, IF
PDK1 Polyclonal Antibody	ABP52170	H, M, R	WB, IHC, IF
Tubulin α Polyclonal Antibody	ABP52655	H, M, R	WB, IHC, IF
Tubulin β Polyclonal Antibody	ABP52657	M, R	WB, IHC, IF
VIM Polyclonal Antibody	ABP52697	H, M, R	WB, IHC, IF
α skeletal muscle actin Mab	ABM40149	H, M, R	WB, IHC, IF, IP
α-SMA Monoclonal Antibody	ABM40186	H, M, R	WB, IHC, IF
α-SMA Polyclonal Antibody	ABP57522	H, M, R	WB, IHC, IF
α-tubulin (Acetyl Lys40) Mab 4A8)	ABM40227	H, M, R	WB, IHC, IF
β I tubulin Monoclonal Antibody	ABM40037	H, M, R	WB, IHC, IF
β II tubulin Monoclonal Antibody	ABM40151	H, M, R	WB, IHC, IP



6. Epigenetics and Nuclear Signaling

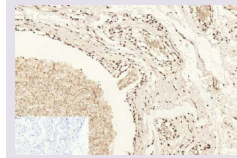
Epigenetics is a rising subject, and the research fields involves in DNA methylation, genomic imprinting, gene silencing, histone modification, and so on. Epigenetics are stable heritable traits that cannot be explained by changes in DNA sequence.

Abbkine chooses synthetic peptides as immunogen, which shows good effects in many research experiments. Abbkine offers comprehensive portfolio of epigenetics and nuclear signaling primary antibodies with high specific and mutiple applications to meet and satisfy your research requirements.



Product Name	Cat. No.	Reactivity	Application
AP-1 (phospho Ser63) Pab	ABP50261	H, M, R	WB, IHC, IF
AP-1 Polyclonal Antibody	ABP50669	H, M, R	WB, IHC, IF, IP
Bcl-6 Polyclonal Antibody	ABP53042	H, M, R	WB, IHC, IF
BRCA1 Polyclonal Antibody	ABP50789	H, R	WB, IHC, IF
C/EBP β Polyclonal Antibody	ABP53491	H, M, R	WB, IHC, IF
c-Fos Polyclonal Antibody	ABP50965	H, M, R	WB, IHC, IF
Chk2 (phospho Thr68) Pab	ABP50289	H, M, R	WB, IHC, IF
CHOP Mouse Mab(2B1)	ABM40322	H, M, R	WB, IHC, IF
CREB-1 (phospho Ser133) Pab	ABP50293	H, M, R	WB, IHC, IF, IP
CREB-1 Polyclonal Antibody	ABP51046	H, M, R	WB, IHC, IF
Dnmt3b Polyclonal Antibody	ABP51190	H, C	WB, IHC, IF
E2F-1 Polyclonal Antibody	ABP57536	H, M, R	WB, IHC, IF
eIF4A1 Monoclonal Antibody	ABM40136	H, M, R	WB, IHC, IF
EPAS-1 Polyclonal Antibody	ABP53056	H, M, R	WB, IHC, IF
ERCC1 Monoclonal Antibody	ABM40078	H	WB
FoxO3A (phospho Ser253) Pab	ABP54309	H, M, R	WB, IHC, IF
HDAC1 Mouse Mab (4E1)	ABM40270	H, M, R	IHC, IF
Histone H2A Polyclonal Antibody	ABP53231	H, M, R	WB, IHC
Histone H2A.X (phospho Ser139) Pab	ABP50327	H, M, R	WB, IHC
Histone H2A.X Polyclonal Antibody	ABP51526	H, M, R	WB, IHC, IF
Histone H2B Monoclonal Antibody	ABM40162	H, M, R	WB, IF
Histone H3 (Acetyl Lys9) Pab	ABP50089	H, M, R	WB, IHC, IF
Histone H3 (Tri Methyl Lys79) Mab (3G3)	ABM40091	H, M, R	WB, IHC, IF, IP
Histone H3 Monoclonal Antibody	ABM40038	H, M, R, Y	WB, IHC, IF, IP
Histone H3 Polyclonal Antibody	ABP51532	H, M, R	WB, IHC, IF
Histone H4 (Acetyl Lys16) Pab	ABP50248	H, M, R	WB, IHC, IF
Histone H4 (Acetyl Lys16) Pab	ABP50094	H, M, R	WB, IHC, IF

Histone H4 (Acetyl Lys16) Polyclonal Antibody



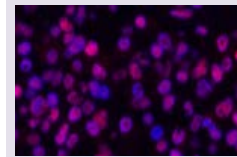
Cat. No: ABP50094

Reactivity: H, M, R

Application: WB, IHC, IF

Immunohistochemical analysis of paraffin-embedded Human breast tissue.

Histone H3 (Acetyl Lys9) Polyclonal Antibody



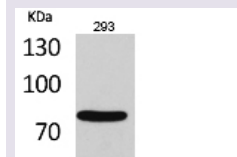
Cat. No: ABP50089

Reactivity: H, M, R

Application: WB, IHC, IF

Immunofluorescence analysis of Human lung cancer tissue.

Bcl-6 Polyclonal Antibody



Cat. No: ABP53042

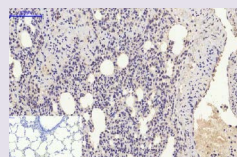
Reactivity: H, M, R

Application: WB, IHC, IF

Western blot analysis of 293 cells using Bcl-6 Polyclonal Antibody. Antibody was diluted at 1:1000.



HMG-1 Polyclonal Antibody



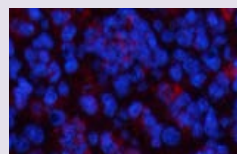
Cat. No: ABP53233

Reactivity: H, M, R

Application: WB, IHC, IF

Immunohistochemical analysis of paraffin-embedded Rat lung tissue.

HP-1γ Mouse Monoclonal Antibody (2F5)



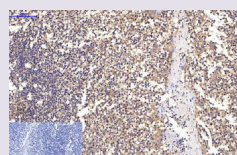
Cat. No: ABM40356

Reactivity: H, M, R

Application: WB, IHC, IF

Immunofluorescence analysis of Mouse spleen tissue.

p70 S6 kinase α Polyclonal Antibody



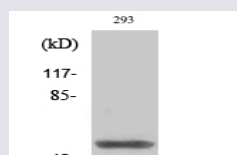
Cat. No: ABP57246

Reactivity: H, M, R

Application: WB, IHC, IF

Immunohistochemical analysis of paraffin-embedded Human tonsil tissue.

Sox-9 Polyclonal Antibody



Cat. No: ABP52482

Reactivity: H, M

Application: WB, IHC, IF

Western Blot analysis of various cells using Sox-9 Polyclonal Antibody diluted at 1: 2000.

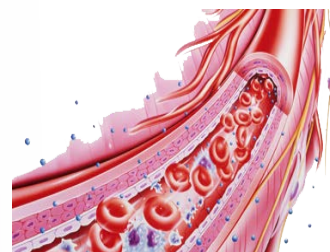
Product Name	Cat. No.	Reactivity	Application
Histone H4 Polyclonal Antibody	ABP53697	H, M, R, Mk	WB, IHC, IF
HMG-1 Polyclonal Antibody	ABP53233	H, M, R	WB, IHC, IF
HP-1α Mouse Mab (5E3)	ABM40359	H, M, R	WB, IHC, IF
HP-1γ Mouse Mab (2F5)	ABM40356	H, M, R	WB, IHC, IF
IRS-1 Polyclonal Antibody	ABP51647	H, M, R	WB, IHC, IF
IκB β Monoclonal Antibody	ABM40229	H, M, R	IHC, IF
IκB-α (phospho Ser32/S36) Pab	ABP50346	H, M, R, Mk	WB, IHC, IF
IκB-α Polyclonal Antibody	ABP51653	H, M, R	WB, IHC, IF
Nrf2 Polyclonal Antibody	ABP53068	H, M, R	WB, IHC, IF
Oct1 Monoclonal Antibody	ABM40089	H	WB, IHC, IF
p300 Polyclonal Antibody	ABP57381	H, M, R	WB, IHC, IF
p70 S6 kinase α Polyclonal Antibody	ABP57246	H, M, R	WB, IHC, IF
p70 S6 kinase α Polyclonal Antibody	ABP57247	M, R	WB, IHC, IF
p70 S6 kinase α Polyclonal Antibody	ABP52138	H, M, R	WB, IHC, IF
PERK (phospho Thr981) Pab	ABP50528	H, M, R	WB, IHC, IF
PERK Polyclonal Antibody	ABP57048	H, M, R	WB, IHC, IF
PPAR Delta Mouse Mab (2F9)	ABM40257	H, M, R	IHC, IF
PPAR-α Polyclonal Antibody	ABP55667	H, M, R	WB, IHC, IF
PPAR-γ Polyclonal Antibody	ABP52252	H, M, R	WB, IHC, IF
PR Monoclonal Antibody	ABM40184	H, M, R	IHC, IF
RUNX2 Polyclonal Antibody	ABP53087	H, M, R	WB, IF
SIRT1 Polyclonal Antibody	ABP52448	H, M	WB, IHC, IF
SLUG Polyclonal Antibody	ABP57198	H, M, R	WB, IHC
SNAI 1 Polyclonal Antibody	ABP52472	H, M, Mk	WB, IHC, IF
Sox-9 Polyclonal Antibody	ABP52482	H, M	WB, IHC, IF
TERT Polyclonal Antibody	ABP57609	H	WB, IHC
Ub Polyclonal Antibody	ABP53272	H, M, R	WB, IHC, IF
Ubiquitin Mouse Mab (5F1)	ABM40290	H, M, R	WB, IHC, IF
XRCC4 Monoclonal Antibody	ABM40086	H	WB, IHC, IF, IP
YAP (phospho Ser127) Pab	ABP50490	H, M, R, Mk	WB, IHC, IF
YAP Polyclonal Antibody	ABP52720	H, M, R	WB, IHC, IF



7. Cardiovascular

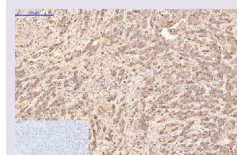
Cardiovascular disease (CVD) is a series of diseases that involve the heart or blood vessels, and they are the leading cause of death globally. However, it is estimated that 90% of CVD are preventable. The underlying mechanisms vary depending on the disease in question. Following the evolution of disease, we need to know more mechanisms about it.

Abbkine offers comprehensive portfolio of cardiovascular related monoclonal and polyclonal antibodies with high specific and multiple applications to meet and satisfy your most types of biological analysis. We can help you to find out suitable primary antibodies.



Product Name	Cat. No.	Reactivity	Application
AFP alpha 1 Fetoprotein Mab	ABM40075	H	WB, IHC, IF
BMP-2 Polyclonal Antibody	ABP57423	H, M, R	WB, IHC, IF
CA IX Monoclonal Antibody	ABM40076	H	WB, IHC, IF, IP
CD41 Monoclonal Antibody	ABM40106	H	IHC
CD63 Polyclonal Antibody	ABP53256	H	WB, IHC, IF
Cox-2 Polyclonal Antibody	ABP51035	H	WB, IHC, IF
Cystatin C Mouse Mab (7F11)	ABM40280	H	WB, IHC, IF
FAK (phospho Tyr397) Pab	ABP50493	H, M, R	WB, IHC
FAK Polyclonal Antibody	ABP55907	H, M, R	WB, IHC, IF
HIF-1α Polyclonal Antibody	ABP51513	H, M, R	WB, IHC, IF
IL-8 Polyclonal Antibody	ABP52884	H	WB, IHC, IF
Jagged1 Polyclonal Antibody	ABP53132	H, M, R	WB, IHC, IF
Lactoferrin Monoclonal Antibody	ABM40160	H	IHC, IF
MMP-2 Polyclonal Antibody	ABP51807	H, M, R, Mk	WB, IHC, IF
MMP-9 Polyclonal Antibody	ABP53088	H	WB, IHC, IF
OPG Polyclonal Antibody	ABP52083	H, M	WB, IHC, IF
OPN Polyclonal Antibody	ABP52084	H, M, R	WB, IHC
PDGF-B Polyclonal Antibody	ABP55531	H, M, R	WB, IHC, IF
PDGFR-β Polyclonal Antibody	ABP52167	H, M, R	WB, IHC, IF
TIMP-1 Polyclonal Antibody	ABP52610	H, M, R	WB, IHC, IF
VEGF-A Polyclonal Antibody	ABP56497	H, M, R	IHC, IF

AFP alpha 1 Fetoprotein Monoclonal Antibody



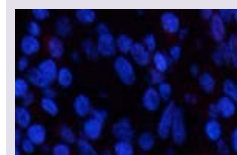
Cat. No: ABM40075

Reactivity: H

Application: WB, IHC, IF

Immunohistochemical analysis of paraffin-embedded Human breast cancer tissue.

PDGF-B Polyclonal Antibody



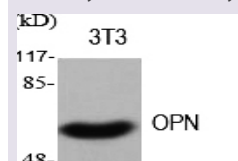
Cat. No: ABP55531

Reactivity: H, M, R

Application: WB, IHC, IF

Immunofluorescence analysis of human stomach tissue.

OPN Polyclonal Antibody



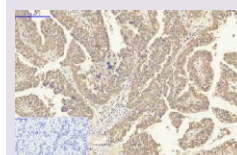
Cat. No: ABP52084

Reactivity: H, M, R

Application: WB, IHC

Western Blot analysis of various cells using OPN Polyclonal Antibody diluted at 1:500.

IL-8 Polyclonal Antibody



Cat. No: ABP52884

Reactivity: H

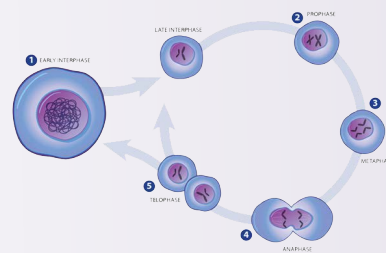
Application: WB, IHC, IF

Immunohistochemical analysis of paraffin-embedded Human liver cancer tissue.



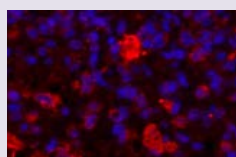
8. Cell Cycle

Cell cycle is a chain of events that a cell produces two daughter cells through division and DNA duplication. In eukaryotes, the cell cycle is often divided into three periods: interphase, the mitotic (M) phase, and cytokinesis. During the interphase, cell grows and synthesizes abundant DNA, RNA and proteins, preparing it for cell divisions and duplicating its DNA. The mitotic (M) phase is the main process, and chromosome separation takes place in this period. During the final stage, all cell components separate, generating two daughter cells.



Our top selling antibodies against cell cycle targets are as follows. Contact us for more high quality research antibodies.

Cdc2 Polyclonal Antibody



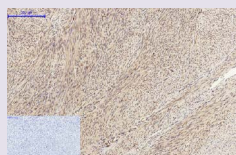
Cat. No: ABP50923

Reactivity: H, M, R

Application: WB, IHC, IF

Immunofluorescence analysis of mouse lung tissue.

Cyclin A Polyclonal Antibody



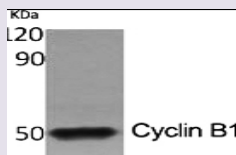
Cat. No: ABP51079

Reactivity: H, M, R, Mk

Application: WB, IHC, IF

Immunohistochemical analysis of paraffin-embedded Human uterus tissue.

Cyclin B1 Polyclonal Antibody



Cat. No: ABP51081

Reactivity: H, M, R

Application: WB, IHC, IF

Western Blot analysis of various cells using Cyclin B1 Polyclonal Antibody diluted at 1: 500.

Product Name	Cat. No.	Reactivity	Application
Cdc2 Polyclonal Antibody	ABP50923	H, M, R	WB, IHC, IF
Cdk2 Polyclonal Antibody	ABP50941	H, M, R	WB, IHC, IF
Cdk4 Polyclonal Antibody	ABP52929	H, M, R	WB, IHC, IF
Cyclin A Polyclonal Antibody	ABP51079	H, M, R, Mk	WB, IHC, IF
Cyclin B1 Polyclonal Antibody	ABP51081	H, M, R	WB, IHC, IF
Cyclin D1 Polyclonal Antibody	ABP51082	H, M, R	WB, IHC, IF
Cyclin E1 Polyclonal Antibody	ABP51083	H, M, R	WB, IHC, IF
JAK2 (phospho Tyr1007) Pab	ABP50349	H, M, R	WB, IHC
JAK2 Polyclonal Antibody	ABP51657	H, M, R	WB, IHC, IF
Ki 67 Monoclonal Antibody	ABM40064	H, M, R	IHC, IF
Ki-67 Polyclonal Antibody	ABP51674	H	WB, IHC, IF
MDM2 Polyclonal Antibody	ABP52917	H	WB, IHC, IF
mTOR (phospho Ser2448) Pab	ABP50363	H, M, R	WB, IHC, IF
mTOR Polyclonal Antibody	ABP54398	H, M, R	WB, IHC, IF
p16 Polyclonal Antibody	ABP57356	H	WB
p21 Polyclonal Antibody	ABP52101	H, M, R	WB, IHC, IF
p27 Polyclonal Antibody	ABP52104	H	WB, IHC
p53 (Acetyl Lys382) Polyclonal Antibody	ABP50123	H	WB, IHC
p53 (Di-Methyl-Lys370) Pab	ABP50086	H	WB, IHC, IF
p53 (phospho Ser15) Pab	ABP50382	H, R	WB, IHC, IF, IP
p53 (phospho Thr18) Pab	ABP50389	H, M, R	WB, IHC, IF
p53 Monoclonal Antibody	ABM40052	H	WB, IHC, IF
p53 Polyclonal Antibody	ABP52120	H, M, R, Mk	WB, IHC, IF
PTEN (phospho Ser380/T382/T383) Pab	ABP55883	H, M, R	WB, IHC
PTEN Polyclonal Antibody	ABP57477	H, M, R	WB, IF
Rb Polyclonal Antibody	ABP52334	H, M, R	WB, IHC, IF



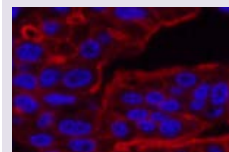
9. Other primary antibodies

Abbkine's primary antibodies cover many different fields to satisfy your biology research needs. We have other thousands of antibodies which haven't been listed in the tables. Our aim is to provide high quality products and good service for researchers from all over the world and to promote the scientific progress.



Product Name	Cat. No.	Reactivity	Application
ABCB5 Monoclonal Antibody	ABM40074	H	WB, IHC, IF
Calnexin Polyclonal Antibody	ABP50831	H, M, R	WB, IHC, IF
Carcinoembryonic Antigen Mab	ABM40061	H	IHC, IF
Catalase Polyclonal Antibody	ABP52886	H	WB, IHC, IF
Catenin- β (phospho Ser37) Pab	ABP50278	H, M, R	WB, IHC, IF
Catenin- β Monoclonal Antibody	ABM40192	H, M, R	WB, IHC, IF
Caveolin-1 Polyclonal Antibody	ABP50874	H, M, R	WB, IHC, IF
CDX2 Monoclonal Antibody	ABM40057	H, M, R	WB, IHC, IF
COL1A2 Polyclonal Antibody	ABP51021	H, M, R	WB, IHC, IF
COL2A1 Polyclonal Antibody	ABP51023	H, M, R	WB, IHC, IF
Collagen I Mouse Mab (4H10)	ABM40379	H, M, R	IHC, IF
HSV-Tag Monoclonal Antibody	ABM40113	Null	WB, IHC, IF
CYCS Monoclonal Antibody	ABM40191	H, M, R	WB, IHC, IF
CYCS Polyclonal Antibody	ABP57598	H, M, R	WB, IHC, IF
ER α Polyclonal Antibody	ABP51303	H, M, R	WB, IHC, IF
ER β Polyclonal Antibody	ABP51305	H, M, R	WB, IHC, IF
Fibronectin Monoclonal Antibody	ABM40137	H, M, R	WB, IHC, IF
Flk-1 Polyclonal Antibody	ABP51352	H, M	WB, IHC, IF
HAO1 Monoclonal Antibody	ABM40189	M, R	WB, IHC, IF
HSP A5 Polyclonal Antibody	ABP51578	H, M, R, Mk	WB, IHC, IF
IGF-IR Polyclonal Antibody	ABP51596	H, M, R	WB, IHC, IF
Integrin β 3 Polyclonal Antibody	ABP53323	H	WB, IHC
Luciferase Mouse Mab (6B8)	ABM40300	Fi	WB, IHC, IF
PDGFR α Mouse Mab (7A3)	ABM40334	H, M, R	IHC, IF
Peroxiredoxin 1 Monoclonal Antibody	ABM40112	H, M, R	WB, IHC, IF
TGF β RI (phospho Ser165) Pab	ABP56379	H, M, R	WB, IHC, IF
TGF β RII Polyclonal Antibody	ABP52597	H, M, R	WB, IHC, IF
TGF β 1 Polyclonal Antibody	ABP52598	H, M, R	WB, IHC, IF
TNF- α Polyclonal Antibody	ABP52624	H, M, R	WB, IHC, IF
VE-Cadherin Polyclonal Antibody	ABP53342	H, M, R	WB, IHC, IF
VEGF-B Polyclonal Antibody	ABP53217	H, M, R	WB, IHC

ABCB5 Monoclonal Antibody



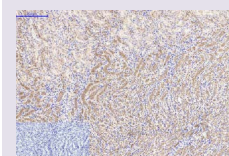
Cat. No: ABM40074

Reactivity: H

Application: WB, IHC, IF

Immunofluorescence analysis of Human liver cancer tissue.

Catenin- β Monoclonal Antibody



Cat. No: ABM40192

Reactivity: H, M, R

Application: WB, IHC, IF

Immunohistochemical analysis of paraffin-embedded Mouse kidney tissue.

TGF β RI (phospho Ser165) Polyclonal Antibody



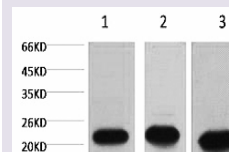
Cat. No: ABP56379

Reactivity: H, M, R

Application: WB, IHC, IF

Immunohistochemical analysis of paraffin-embedded Human liver tissue.

Peroxiredoxin 1 Monoclonal Antibody



Cat. No: ABM40112

Reactivity: H, M, R

Application: WB, IHC, IF

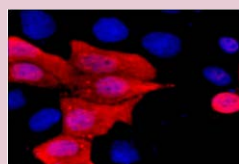
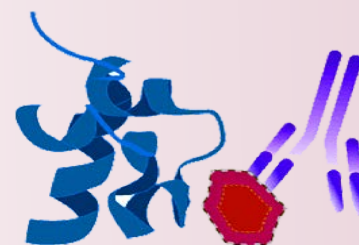
Western blot analysis of 1) MCF7, 2) Rat kidney tissue, 3) Mouse brain tissue, diluted at 1:2000.



Epitope & tag antibodies

Raising target protein antibodies is time-consuming and expensive. Epitope tags, including His tag, GST tag, S tag, HA tag, DDDDK tag, Myc tag, MBP Tag and mCherry tag offer a convenient solution to this problem by acting as universal epitopes for detection and purification without disturbing the structure of the protein to which they are fused.

Abbkine offers comprehensive portfolio of epitope monoclonal and polyclonal antibodies with high specific and multiple applications to meet and satisfy your most types of tagged protein quantity and localization analysis. Bulk size and customized conjugations are also available upon requests.



Anti-His Tag Mouse Monoclonal Antibody (5C3)

Cat #: A02050

Application: WB, IF, IP

Immunofluorescence staining of His fusion protein in 293 cells with red and counterstained with DAPI.

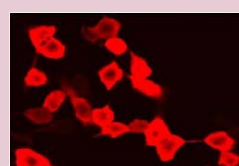


Anti-HA Tag Mouse Monoclonal Antibody (4F6)

Cat #: A02040

Application: WB, IF, IP

Immunoprecipitation following Western blotting analysis of HA fusion protein in 293 cells.

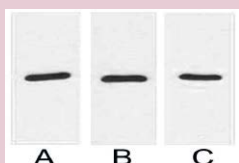


Anti-mCherry Tag Mouse Mab (9D3)

Cat #: A02080

Application: WB, IF

Immunofluorescence staining of mCherry fusion protein expressed in 293 cells.



Anti-RFP Tag Mouse Monoclonal Antibody (9D1)

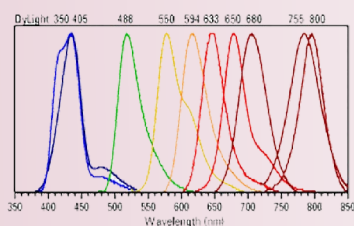
Cat #: A02120

Western blot analysis different dilutions of RFP fusion protein with Anti-RFP monoclonal antibody.

Product Name	Catalog #	Application
Anti-DDDDK Tag Mouse Monoclonal Antibody (1B10)	A02010	WB, IF, IP
Anti-GFP Tag Mouse Monoclonal Antibody (3D3)	A02020	WB, IP
Anti-GST Tag Mouse Monoclonal Antibody (2A8)	A02030	WB
Anti-HA Tag Mouse Monoclonal Antibody (4F6)	A02040	WB, IF, IP
Anti-His Tag Mouse Monoclonal Antibody (5C3)	A02050	WB, IF, IP
Anti-Myc Tag Mouse Monoclonal Antibody (2D5)	A02060	WB, IF, IP
Anti-MBP Tag Mouse Monoclonal Antibody (9Y5)	A02070	WB
Anti-mCherry Tag Mouse Monoclonal Antibody (9D3)	A02080	WB, IF
Anti-E2 Tag Mouse Monoclonal Antibody (12T4)	A02090	WB
Anti-HSV Tag Mouse Monoclonal Antibody (16T2)	A02100	WB
Anti-KT3 Tag Mouse Monoclonal Antibody (14D8)	A02110	WB
Anti-RFP Tag Mouse Monoclonal Antibody (9D1)	A02120	WB
Anti-S Tag Mouse Monoclonal Antibody (9T10)	A02130	WB
Anti-Strep Tag Mouse Monoclonal Antibody (8Y3)	A02140	WB
Anti-T7 Tag Mouse Monoclonal Antibody (6D4)	A02150	WB
Anti-Trx Tag Mouse Monoclonal Antibody (14D4)	A02160	WB
Anti-V5 Tag Mouse Monoclonal Antibody (11D5)	A02170	WB, IF, IP
Anti-VSV-G Tag Mouse Monoclonal Antibody (14D2)	A02180	WB, IF, IP
Anti-CBP Tag Monoclonal Antibody (12H5)	A02190	WB
Anti-TAP Tag Monoclonal Antibody (4H2)	A02200	WB
Anti-Avi-Tag Monoclonal Antibody (5G11)	A02210	WB
Anti-SRT-Tag Monoclonal Antibody (11G3)	A02220	WB
Anti-mStrawberry Monoclonal Antibody (4C9)	A02240	WB
Anti-EYFP-Tag Monoclonal Antibody (10T3)	A02250	WB
Anti-mOrange Monoclonal Antibody (9A10)	A02260	WB
Anti-AmCyan Monoclonal Antibody (8T2)	A02270	WB
Anti-ECFP-Tag Monoclonal Antibody (6B11)	A02280	WB
Anti-Nano-Tag9 Monoclonal Antibody (11T3)	A02300	WB



DyLight® secondary antibodies



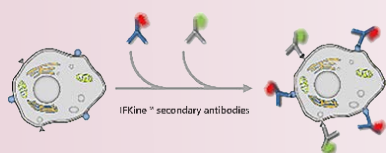
DyLight® Fluors have the absorption maxima ranging from 350nm to 777nm, which exhibit higher fluorescence intensity and photostability than Alexa Fluor, CyDye and LI-COR Dyes in many applications and remain highly fluorescent over a broad pH range (pH 4-9). Additionally, the water solubility of the DyLight Dyes allows a high dye-to-protein ratio to be achieved without causing precipitation of conjugates.

Abbkine offers comprehensive portfolio of DyLight® conjugated secondary antibodies with high specific and mutple applications to meet and satisfy your most types of immunoassay.

Product Name	Catalog #	Spectra
DyLight 350, Goat Anti-Mouse IgG	A23010	
DyLight 350, Goat Anti-Rabbit IgG	A23020	
DyLight 405, Goat Anti-Mouse IgG	A23110	
DyLight 405, Goat Anti-Rabbit IgG	A23120	
DyLight 405, Rabbit Anti-Goat IgG	A23130	
DyLight 405, Goat Anti-Rat IgG	A23140	
DyLight 488, Goat Anti-Mouse IgG	A23210	
DyLight 488, Goat Anti-Rabbit IgG	A23220	
DyLight 488, Rabbit Anti-Goat IgG	A23230	
DyLight 488, Goat Anti-Rat IgG	A23240	
DyLight 549, Goat Anti-Mouse IgG	A23310	
DyLight 549, Goat Anti-Rabbit IgG	A23320	
DyLight 549, Rabbit Anti-Goat IgG	A23330	

Product Name	Catalog #	Spectra
DyLight 549, Goat Anti-Rat IgG	A23340	
DyLight 594, Goat Anti-Mouse IgG	A23410	
DyLight 594, Goat Anti-Rabbit IgG	A23420	
DyLight 594, Rabbit Anti-Goat IgG	A23430	
DyLight 594, Goat Anti-Rat IgG	A23440	
DyLight 649, Goat Anti-Mouse IgG	A23610	
DyLight 649, Goat Anti-Rabbit IgG	A23620	
DyLight 649, Rabbit Anti-Goat IgG	A23630	
DyLight 649, Goat Anti-Rat IgG	A23640	
DyLight 680, Goat Anti-Mouse IgG	A23710	
DyLight 680, Goat Anti-Rabbit IgG	A23720	
DyLight 800, Goat Anti-Mouse IgG	A23910	
DyLight 800, Goat Anti-Rabbit IgG	A23920	

IFKine™ secondary antibodies



IFKine™ is series of unique fluorence staining secondary antibodies with improved brightness, photostability and less nonspecific hybridization and background. The latest generation of IFKine fluorescent dyes ensure the best fluorescent performance, while it's donkey host and other species of serum/IgG absorbed make IFKine™ secondary antibodies the ideal for use in fluorence staining, especially in fluorence multiple labeling.

IFKine™ Green Donkey Anti-Mouse IgG
Cat #: A24211
Application: IF

Immunofluorescent stain of α -tubulin and CCSP with IFKine™ Green Donkey Anti-Mouse IgG.

Product Name	Catalog #	Application	Spectra
IFKine™ Green Donkey Anti-Mouse IgG	A24211	IF, FC	
IFKine™ Green Donkey Anti-Rabbit IgG	A24221	IF, FC	
IFKine™ Green Donkey Anti-Goat IgG	A24231	IF, FC	
IFKine™ Orange Donkey Anti-Mouse IgG	A24311	IF, FC	
IFKine™ Red Donkey Anti-Mouse IgG	A24411	IF, FC	
IFKine™ Red Donkey Anti-Rabbit IgG	A24421	IF, FC	



Part of Abbkine Product Publications

Abbkin products have been widely cited and recommended by hundreds and thousands of world's life science research journals. Below are part of publications list.

If you have published articles using Abbkin's products, kindly send email to marketing@abbkine.com, or submit your publications [online here](#). We'll reward you gift for your continue research.



Xu H J, Xue J, Lu B, et al. Two insulin receptors determine alternative wing morphs in planthoppers. *Nature*, 2015, 519(7544): 464-467. IF: 38.138.

Huang, Hai-Jian, et al. Rice ragged stunt virus-induced apoptosis affects virus transmission from its insect vector, the brown planthopper to the rice plant. *Scientific reports* 5 (2015). IF: 5.228.

Yu L, Liang H, Lu Z, et al. Membrane receptor-dependent Notch1/Hes1 activation by melatonin protects against myocardial ischemia-reperfusion injury: in vivo and in vitro studies. *Journal of pineal research*, 2015, 59(4): 420-433. IF: 9.314.

Chen G, Tian F, Li C, et al. In vivo real-time visualization of mesenchymal stem cells tropism for cutaneous regeneration using NIR-II fluorescence imaging. *Biomaterials*, 2015, 53: 265-273. IF: 8.387.

Li C, Cao L, Zhang Y, et al. Preoperative Detection and Intraoperative Visualization of Brain Tumors for More Precise Surgery: A New Dual-Modality MRI and NIR Nanoprobe. *Small*, 2015, 11(35): 4517-4525. IF: 8.315.

Liu S L, Wu Q M, Zhang L J, et al. Three-Dimensional Tracking of Rab5- and Rab7- Associated Infection Process of Infl uenza Virus. *Small*, 2014, 10(22): 4746-4753. IF: 8.315.

Long Y M, Zhao X C, Clermont A C, et al. Negatively charged silver nanoparticles cause retinal vascular permeability by activating plasma contact system and disrupting adherens junction. *Nanotoxicology*, 2016, 10(4): 501-511. IF: 7.913.

Xue X, Wang Q, Qu Y, et al. Development of the photosynthetic apparatus of *Cunninghamia lanceolata* in light and darkness. *New Phytologist*, 2016. IF: 7.21.

Li Y, Zhang L, Li D, et al. The Arabidopsis F-box E3 ligase RIFP1 plays a negative role in abscisic acid signalling by facilitating ABA receptor RCAR3 degradation. *Plant, cell & environment*, 2016, 39(3): 571-582. IF: 6.169.

Niu, Xuan, et al. P2Y12 Promotes Migration of Vascular Smooth Muscle Cells Through Cofilin Dephosphorylation During Atherogenesis. *Arteriosclerosis, Thrombosis, and Vascular Biology* (2017): ATVBaha-116. IF: 6.01.

Zheng, Xiaoyao, et al. A hybrid siRNA delivery complex for enhanced brain penetration and precise amyloid plaque targeting in Alzheimer's disease mice. *Acta Biomaterialia* (2016). IF: 6.008.

Ji Y X, Zhang P, Zhang X J, et al. The ubiquitin E3 ligase TRAF6 exacerbates pathological cardiac hypertrophy via TAK1-dependent signalling. *Nature communications*, 2016, 7. IF: 11.329.

Zheng, Peng, et al. Quantitative Proteomics Analysis Reveals Novel Insights into Mechanisms of Action of Long Noncoding RNA Hox Transcript Antisense Intergenic RNA (HOTAIR) in HeLa Cells. *Molecular & Cellular Proteomics* 14.6 (2015): 1447-1463. IF:5.912.

Yang L, Tang H, Kong Y, et al. LGR5 Promotes Breast Cancer Progression and Maintains Stem-Like Cells Through Activation of Wnt/ β -Catenin Signaling. *Stem Cells*, 2015, 33(10): 2913-2924. IF: 5.902.

Wan, Quanyuan, et al. MDA5 Induces a Stronger Interferon Response than RIG-I to GCRV Infection through a Mechanism Involving the Phosphorylation and Dimerization of IRF3 and IRF7 in CIK Cells. *Frontiers in Immunology* 8 (2017): 189. IF: 5.695.

Li H T, Zhao X Z, Zhang X R, et al. Exendin-4 Enhances Motor Function Recovery via Promotion of Autophagy and Inhibition of Neuronal Apoptosis After Spinal Cord Injury in Rats. *Molecular neurobiology*, 2015: 1-10. IF: 5.397.

Fang Z, He Q W, Li Q, et al. MicroRNA-150 regulates blood-brain barrier permeability via Tie-2 after permanent middle cerebral artery occlusion in rats. *The FASEB Journal*, 2016, 30(6): 2097-2107. IF: 5.299.

Zheng T, Yang X, Wu D, et al. Salidroside ameliorates insulin resistance through activation of a mitochondria-associated AMPK/PI3K/Akt/GSK3 β pathway. *British journal of pharmacology*, 2015, 172(13): 3284-3301. IF: 5.259.

Lv, Meinan, et al. Characterization of a C3 Deoxygenation Pathway Reveals a Key Branch Point in Aminoglycoside Biosynthesis. *Journal of the American Chemical Society* 138.20 (2016): 6427-6435. IF: 13.038.

Liu, L, et al. Baclofen mediates neuroprotection on hippocampal CA1 pyramidal cells through the regulation of autophagy under chronic cerebral hypoperfusion. *Scientific Reports* 5(2015):14474. IF: 5.228.

Yang, Dongxue, et al. NPAS3 regulates transcription and expression of VGF: implications for neurogenesis and psychiatric disorders. *Frontiers in Molecular Neuroscience* 9 (2016). IF: 5.154.

Abbkine Scientific Co., Ltd. was founded by a number of scientists and marketing experts in the field of life science in California, USA in 2012. With growing demands from Asia Pacific, it move its headquarters to China. Combining cutting edge technology from United States with China's manufacturing engineering and cost advantages, we aim to provide innovative, high quality assay kits, recombinant proteins, antibodies and other research tools to accelerate life science fundamental research, drug discovery, etc.

Contact us

Tel: +86-27-59716789

Fax: +86-27-59716788

Email: service@abbkine.com

<http://www.abbkine.com>

Or your local distributors



www.abbkine.com

Our mission is to help make research possible by supplying scientists worldwide with the basic research tools necessary for advancing human and animal health. We would achieve these goals through a well-defined core strategy and a company culture that fosters integrity, openness, and collaboration, and rewards customer focus, innovation and ownership, thus offer global life science researchers with the highest quality products with an affordable pricing policy.

The logo for LubioScience features the word "Lubio" in a large, dark blue font, with a red, stylized, curved line resembling a DNA helix or a drop to its left. Below "Lubio" is the word "science" in a smaller, dark blue font.

Your distributor in Switzerland

LubioScience GmbH
Baumackerstrasse 24
8050 Zürich

+41 (0)41 417 02 80

info@lubio.ch
www.lubio.ch

The Abbkine logo consists of a stylized green and blue drop shape to the left of the word "Abbkine" in a bold, blue, sans-serif font.