

QuickExtract DNA extraction solution

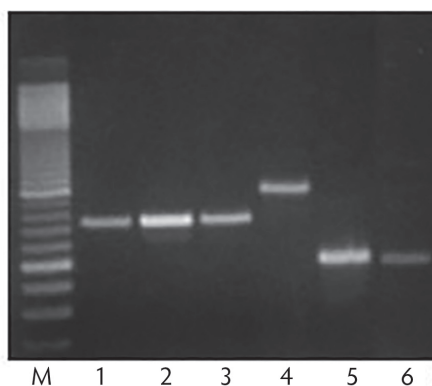
Simple, rapid extraction of PCR-ready DNA

- The QuickExtract™ DNA extraction solution extracts PCR-ready genomic DNA from almost any sample in just 3-8 minutes.
- Many publications support the use of QuickExtract DNA Extraction Solution with samples such as hair follicles, quill-end cells of feathers, tissue-culture cells, buccal cells, zebrafish organs and scales, mouse tail snips, and more. The simple, single-tube procedure can accommodate one to hundreds of samples, and it is easily adapted to multiwell plates with robotic automation systems.

- The extracted DNA is suitable for PCR-based analysis, such as: genomic, transgenic, or viral DNA screening in animals; genetic or environmental research and screening in humans and other organisms; and CRISPR/Cas9 library screening.
- The convenient, scalable protocol involves gentle lysis and extraction that provides high yields of intact nucleic acids—all without the use of toxic chemicals or spin columns.

- **Rapid procedure:** eight-minute protocol for most sample types
- **Simple method:** single-tube protocol with no spin columns
- **Automation-friendly:** process one or hundreds of samples
- **Safe workflow:** no phenol, chloroform, or guanidinium salts
- **Many applications:** suitable for genotyping, human identity testing, viral/microbial screening, and more

Figure 1. FailSafe™ PCR amplifications of genomic DNA isolated using the QuickExtract procedure. All samples were treated with QuickExtract DNA Extraction Solution. PCR was performed using primers to amplify the regions indicated: Lanes 1-3, human β -globin (from human buccal cells, HeLa cells, and human hair follicle, respectively); lane 4, transgenic mouse GAPDH (from mouse tail snip); lane 5, 16S ribosomal RNA gene (from *E. coli*); lane 6, transgenic SV40 T antigen (from mouse tail snip).



PCR-ready DNA from a variety of samples

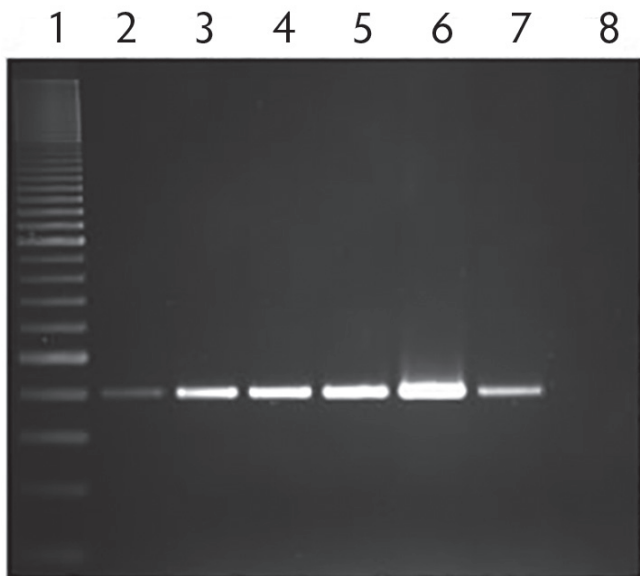
epicentre®

Exclusively available thru Lucigen.

Ordering information

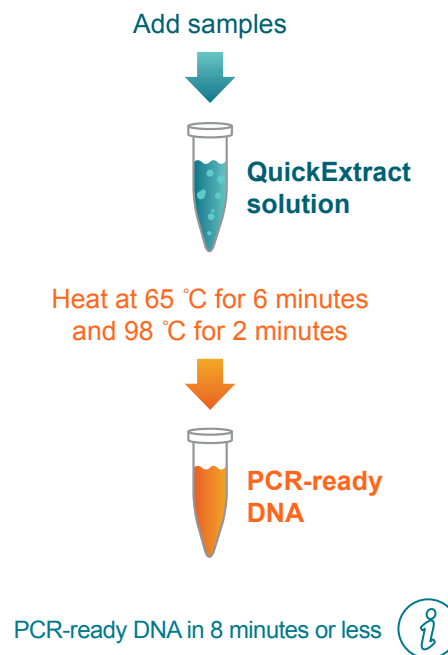
Cat no.	Size	Description
QE09050	50 mL (100 extractions)	QuickExtract DNA Extraction Solution
QE0905T	5 mL (10 extractions)	

Figure 2. PCR amplification of DNA extracted from multiple zebrafish (*Danio rerio*) organs using QuickExtract DNA Extraction Solution. DNA was extracted from the following organs using 100 µL of QuickExtract DNA Extraction Solution, and 1 µL of each extracted sample was used to amplify a single-copy crystallin-like gene. Lane 1, 100-bp ladder; lanes 2-3, fins; lanes 4-5, eyes; lanes 6-7, scales; lane 8, no-DNA control.



Sensitive PCR detection from extracted DNA

Figure 3. The QuickExtract DNA Extraction Solution workflow.



Integrated tools. Accelerated science.

@LGCBiosearch | lucigen.com

All trademarks and registered trademarks mentioned herein are the property of their respective owners. All other trademarks and registered trademarks are the property of LGC and its subsidiaries. Specifications, terms and pricing are subject to change. Not all products are available in all countries. Please consult your local sales representative for details. No part of this publication may be reproduced or transmitted in any form or by any means, electronic or mechanical, including photocopying, recording or any retrieval system, without the written permission of the copyright holder. © LGC Limited, 2018. All rights reserved. GEN/0468/SW/0918 DS-190921.01



For research or investigational use only.

Your distributor in Switzerland

LubioScience GmbH
 Baumackerstrasse 24
 8050 Zürich
 +41 (0)41 417 02 80

info@lubio.ch
www.lubio.ch